

\Orchestrating a brighter world

**NEC**

Professional Installation Projector

**PX803UL**



# Powerful installation projectors with laser-phosphor light source supports new, demanding projection applications.

## Laser Light Module

- 20,000-plus hours of virtually maintenance-free operation
- High-brightness, lower power consumption enhances applications such as retail, digital signage and theme parks
- Ability to control brightness creating a stable image over longer time periods

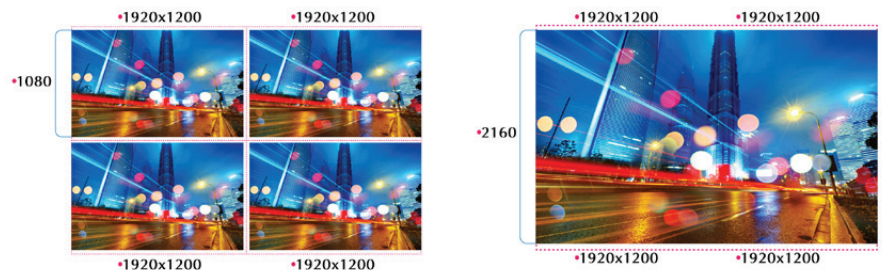
## Flexible

- Enjoy greater installation flexibility with a complete line of optional bayonet style lenses (8) for quick and easy exchange. Lens throw distances range from 2.1 to 179.8 ft
- Tilt-free installation capabilities make these projector ideal for almost any install environment, including portrait orientation
- +/- 50% vertical lens shift and +/- 15% horizontal lens shift capabilities make alignment easy

## Screen Splitter

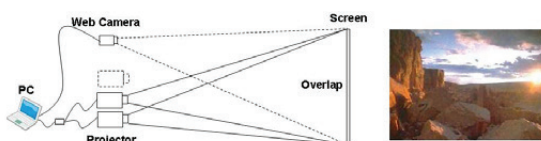
NEC is committed to bringing the latest and greatest innovation to projectors. Multi-display capabilities and TileMatrix technologies are integrated into the new PX series projectors. This processing is all done internally and therefore eliminates the additional hardware typically required to produce a beautiful 4K resolution image.

### Screen Splitter (Multi Display) by Daisy Chain



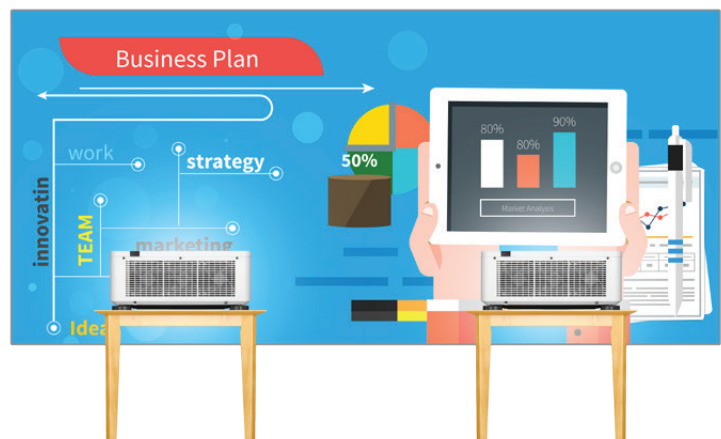
## Stacking correction

The industry's first built-in stacking correction capabilities (up to four projectors) allows the projectors to boost an image's brightness up to 32,000 lumens, which is ideal for larger-sized screens and environments with heavy ambient light. This feature also prevents the complete loss of an image, which can happen when using only one projector.



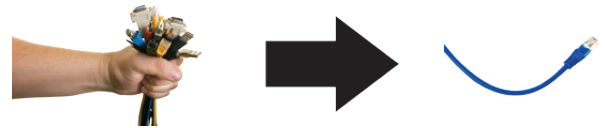
## Edge blending

This function seamlessly blends multiple projected images to display a single high-resolution image.



## Built-In HDBaseT Support

Simplify your installations with HDBaseT. Optimized for video applications and supporting uncompressed full HD digital video, audio, ethernet, power and various control signals. With only a single cable (up to 100m) to run, infrastructure and labor costs are reduced, installations are significantly easier, and there is no cable clutter to manage. With uncompressed HD video support, images have never been more stunning. What's more, control signals are contained in the same cable.



## Remote control

Wired and wireless backlit remote allows you to adjust for complete control of the projectors menu structure in a well lit or dark environment. Direct controls such as lamp mode, aspect ratio, volume and input selection eliminates multiple button pushes.



## DisplayPort

This input provides PX Series models with expanded connectivity with advanced technology.



## Wall color correction presets

These provide for adaptive color tone correction to display properly on non-white surfaces.

On a green wall...



BEFORE auto wall correction



AFTER auto wall correction



## Input panel cover

This optional accessory creates a clean look for your installation, while hiding signal cables and the power cord.

## Cornerstone

Enhanced keystone correction allows for horizontal, vertical and diagonal image correction for aligned images even when the projector is set up at an angle to the screen.



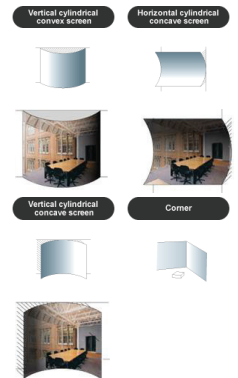
## 3D

When combined with active shutter glasses and 3D emitter, the PX Series Projectors create 3D images from a computer or Blu-ray player. The PX803UL utilize the 3D sync line output from the projector to connect to the 3D emitter. Optional 3D glasses and emitters from XPAND are available from NEC.



## Geometric Correction

Projecting an image isn't confined to a standard flat screen or wall with the NEC PX Series. Geometric correction allows these models to project an image on spheres, cylinders, corner angles and many more non-standard surfaces.



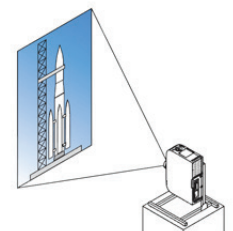
## Tilt-free

The projector can be rotated freely (360°) to orient the image depending on the installation requirements



## Portrait mode

Allows the projector to be rotated (and screen if necessary) to a vertical alignment so that portrait content can be viewed without black bars on the side when landscape mode is used.



## UNIQUE FEATURES

**3D Reform™** allows you to square the image by adjusting horizontally, vertically or diagonally when the projector cannot be placed parallel or perpendicular to the screen

**Advanced AccuBlend™** ensures detailed images when non-native resolution sources are connected to the projector

**AutoSense™** automatically syncs with any computer signal and features one-touch image optimization

**64-step image magnification** with location control

**Discreet source keys** for source selection

**Remote diagnostics** enable the user to monitor and make adjustments to the projector remotely

**Built-in HTTP page** for control and monitoring over a LAN network. Email notification of error messages or lamp end-of-life can be sent to remote locations.

## WARRANTY

Registered owners receive a 3-year parts (excluding consumables) and labor warranty including the first year of InstaCare. The laser module that is included with the projector when purchased is warranted for 12,000 hours or three years, whichever comes first. InstaCare provides the original owner one year of either limited 3 business day repair/return or next business day exchange.

## IN THE BOX

Remote control, batteries, power cord, user's manual on CD-ROM, quick start guide, product registration card.

## ACCESSORIES

<b>SCP200</b>	Suspended ceiling plate
<b>NC1100CM</b>	Ceiling mount
<b>RMT-PJ35</b>	Replacement remote control
<b>NP01PW1</b>	Power cable
<b>RGBCBL-PJPX</b>	RGB cable
<b>Optional Lenses</b>	NP16FL, NP17ZL, NP18ZL, NP19ZL, NP20ZL, NP21ZL, NP31ZL
<b>SB-01HC</b>	HD/SS-SDI input card
<b>SB-04HC</b>	3G/HD/SD-SDI input Card
<b>SB-06WC</b>	WiDi / Miracast Media-Player
<b>XPAND X105-RF-1</b>	3D Glasses
<b>XPAND AD025-RF-X1</b>	RF Emitter
<b>N8000-8830</b>	NEC OPS PC with Intel Core i5, 320GB Hard Drive, Windows Embedded Standard 7
<b>N8000-8822</b>	NEC OPS PC with Intel Celeron, 320GB Hard Drive, Windows Embedded Standard 7
<b>NECEW2-I</b>	Extends term of parts and labor warranty to 4 years
<b>ADVEXON1-I</b>	Extends term of InstaCare service program to 2 years
<b>ADVEXON2-I</b>	Extends term of InstaCare service program to 3 years

## ORDERING MODEL NUMBERS

NP-PX803UL-BK  
NP-PX803UL-WH

		PX803UL
Display Technology		0.67" DMD
Light Output (lumens)		8000 normal / Eco = variable
Resolution	Native	WUXGA 1920 x 1200
	Maximum	4K 4096 x 2160
Contrast Ratio (up to)		10,000:1 with dynamic contrast
Lamp Life (up to)		20,000 hours
Screen Size (diagonal)		30 to 300 in. / 0.76 to 7.62m
Throw Ratio	NP39ML	0.38:1
	NP31ZL	0.75 - 0.93:1
	NP16FL	0.76:1
	NP17ZL	1.25 - 1.79:1
	NP18ZL	1.73 - 2.27:1
	NP19ZL	2.22 - 3.67:1
	NP20ZL	3.60-5.40:1
	NP21ZL	5.50-8.60:1
Projection Distance		2.1 to 179.8 ft. / 0.64 to 54.8m
Projection Angle		2.1 to 19.1° tele / 3.3 to 24.0° wide
Lens	Zoom	Powered
	Zoom Ratio	Variable
	Focus	Powered
	NP39ML	F=2.0, f=5.64mm
	NP31ZL	F=1.96 to 2.3, f=11.3 to 14.1mm
	NP16FL	F=1.85, f=11.6mm
	NP17ZL	F=1.85 to 2.5, f=18.7 to 26.5mm
	NP18ZL	F=1.64 to 1.86, f=25.7 to 33.7mm
	NP19ZL	F=1.86 to 2.48, f=32.9 to 54.2mm
	NP20ZL	F=1.85 to 2.4, f=52.8 to 79.1mm
	NP21ZL	F=1.85 to 2.48, f=78.5 to 121.9mm
Shift	Powered +0.59 vertical, +/-28 horizontal	
Keystone Correction		+/- 40° horizontal, +/- 40° vertical
Synchronization Range	Horizontal	Analog: 15-100kHz, Digital: 15-153kHz
	Vertical	Analog: 48-120Hz, Digital: 24-120Hz
Supported Video Standards		NTSC, NTSC4.43, PAL, PAL-60, PAL-M, PAL-N, SECAM
SD/HD Video Signal Compatibility		1080p, 1080i, 720p, 576p, 576i, 480p, 480i
PC Signal Compatibility		VGA, SVGA, XGA, SXGA, SXGA+, UXGA, WUXGA
Macintosh Compatibility		Yes
Input/Output Terminals	RGB1 (analog)	VGA 15 pin D-sub, Component video using ADP-CV1E adapter
	RGB2 (analog)	5-BNC
	RGB3 (digital)	HDMI (V1.4) w/HDCP
	RGB4 (digital)	DisplayPort w/HDCP
	RGB5 (digital)	HDBaseT
	Option Slot	OPS
Monitor Out	HDMI (V1.4) w/HDCP	
3D Sync Line		3Pin D
External Control		RS-232, IR, HDBaseT, Stereo Mini, RJ-45
Sync Compatibility		Separate Sync / Composite Sync / Sync on G
Power Requirements		100 - 240V AC, 50/60Hz
Input Current		9.4A
Power Consumption (ECO off/ECO Mode/Standby/Standby-Power Saving)		874W/456W/4.3W/0.18W
Installation Orientation		Floor/Front, Floor/Rear, Ceiling/Front, Ceiling/Rear
Dimensions (WxDxH)		19.7 x 22.8 x 8.5 in. / 500 x 583 x 216mm
Net Weight		61.7 lbs. / 28.0 kg
Fan Noise		40 dB normal / 35 dB eco
Regulations		USA: UL(UL60950-1, Laser + Lamp (IEC60825-1 + IEC62471), FCC Part15 Class A Canada: CUL(UL60950-1, Laser + Lamp (IEC60825-1 + IEC62471), ICES-003 Class A
Operating Temperature		41° - 104°F / 5° - 40°C
Humidity		20-80% non-condensing
Storage		-14° - 122°F / -10° - 50°C

\* Lens does not ship with the projector. Additional accessories are available, including screens, carts, mount accessories and replacement cables. Visit [www.necdisplay.com](http://www.necdisplay.com) for details.



3D Reform, Advanced AccuBlend, AutoSense and ECO Mode are trademarks of NEC Display Solutions. HDMI, the HDMI Logo and High-Definition Multimedia Interface are trademarks or registered trademarks of HDMI Licensing LLC. All other brand or product names are trademarks or registered trademarks of their respective holders. Product specifications subject to change.