

**VIAPad**



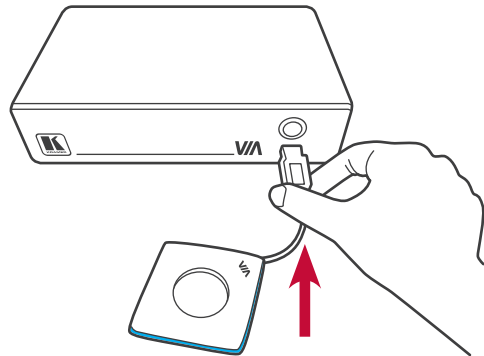
Getting Started

## Pair your **VIA Pad**

\*For first-time use  
of any VIA device

\*Make sure your VIA unit has been  
programmed for VIA Pad before  
starting the pairing process

Connect VIA Pad to your VIA device.



Once connected, VIA Pad will light up blue.

Touch VIA Pad to begin pairing.



During the process, VIA Pad will flash red.

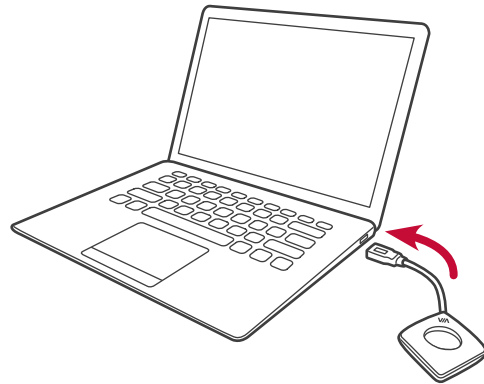
When pairing is complete, VIA Pad will  
light up green.



## Connect your **VIA**Pad

1

Connect your VIA Pad to your laptop.



Once connected, VIA Pad will light up white.

2

Open the VIA Pad folder and double click on "VIA Pad". If necessary, type in your room code and click "Login".

A screenshot of a login window titled "VIA KRAMER". It contains three input fields: "Room Name" with the value "173.168.1.42", "Nick Name" with the value "johndoe", and "Code" which is empty. A red "Login" button is at the bottom right. There is a close button (X) in the top right corner of the window.

Room Name	<input type="text" value="173.168.1.42"/>
Nick Name	<input type="text" value="johndoe"/>
Code	<input type="text"/>
<input type="button" value="Login"/>	

Once you're logged in, VIA Pad will light up blue.

3

Touch to present!



When you present, VIA Pad will light up green.



For more information, visit us at: [www.True-Collaboration.com](http://www.True-Collaboration.com)

VIAPad Quick Start  
(P/N: 2900-300515QS REV 1)



P/N: 2900-300515QS

Rev: 1