

RHOBUS



UNICOL[®]



www.unicol.com



RHOBUS®



Rhubus Trolley with twin screens and wide glass shelf

- * Premium boardroom quality
- * Piano black and other finishes
- * Wide choice of screen options
- * Discreet cable management
- * Lockable housing for codec etc
- * Supplied with castors & static feet

With its clean lines and piano black finish the new Rhobus range of stands and trolleys answers all the needs of the corporate user – from boardroom to exhibition venue.

Choose from the simple but elegant single screen version through to multi screen units to support the very latest and best in video conferencing. Ample capacity is provided within the central mast for cabling, codec and other systems, all accessible through a locking door. Built in power socket comes as standard.

Blade style camera mounts give the option to position screens close together or opened to give separate space for the camera. Use of the optional centre infill panel provides a neat finish.



Rhubus Stand with 46inch screen, VCM and glass shelf

An abundance of practical features



Swap from twin wheel castors to static feet as required



Blade style camera mount allows choice of camera & screen configurations



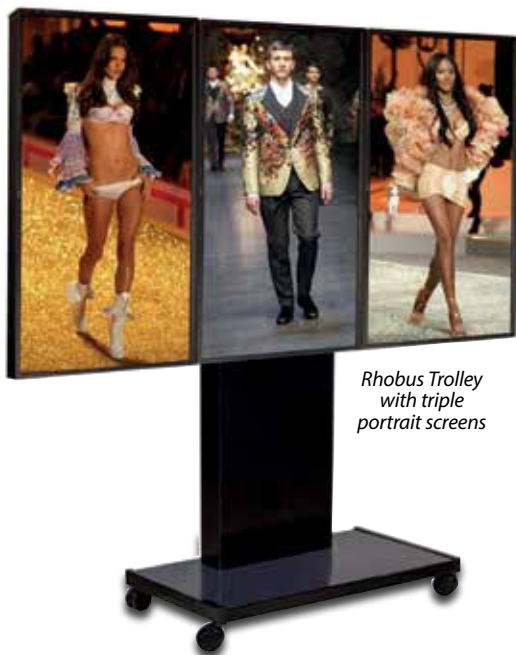
Simple to configure for single, twin or triple screens – edge to edge micro adjustment as standard for multi screens



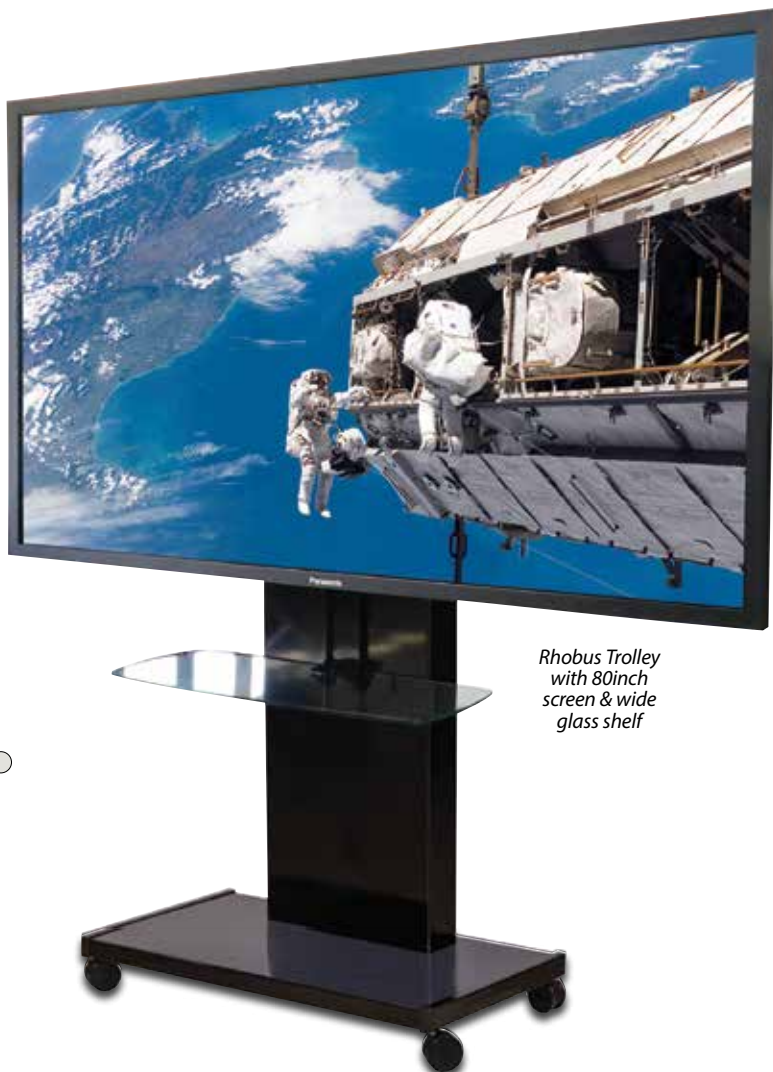
4-way power socket, generous cable management & equipment space



Drop down locking door allows easy access & provides neat appearance



*Rhubus Trolley
with triple
portrait screens*



*Rhubus Trolley
with 80inch
screen & wide
glass shelf*



Rhubus Stands & Trolleys

Order Code

Ex Vat

RH100	Rhubus Single Screen version	1384.40
RH200	Rhubus Twin Screen version	1582.80
RH300	Rhubus Triple Screen version	1691.20

Height to centre of screen 1400mm

Rhubus Accessories

Order Code

mm

Ex Vat

RHGS1	Glass Shelf – 500(w) x 400(d)	78.80
RHGS2	Glass Shelf – 780(w) x 390(d)	89.20
RHCB1	Blade style Camera Mount	85.50
RHCC	Blade mount conversion shelf	35.20
RHP1	Optional centre infill panel	36.80



*Rhubus Trolley
in RAL 7035
light grey with
twin screens,
blade camera
mount & centre
infill panel*



*RHCC
Blade mount
conversion shelf*



*RHP1
centre
infill
Panel*



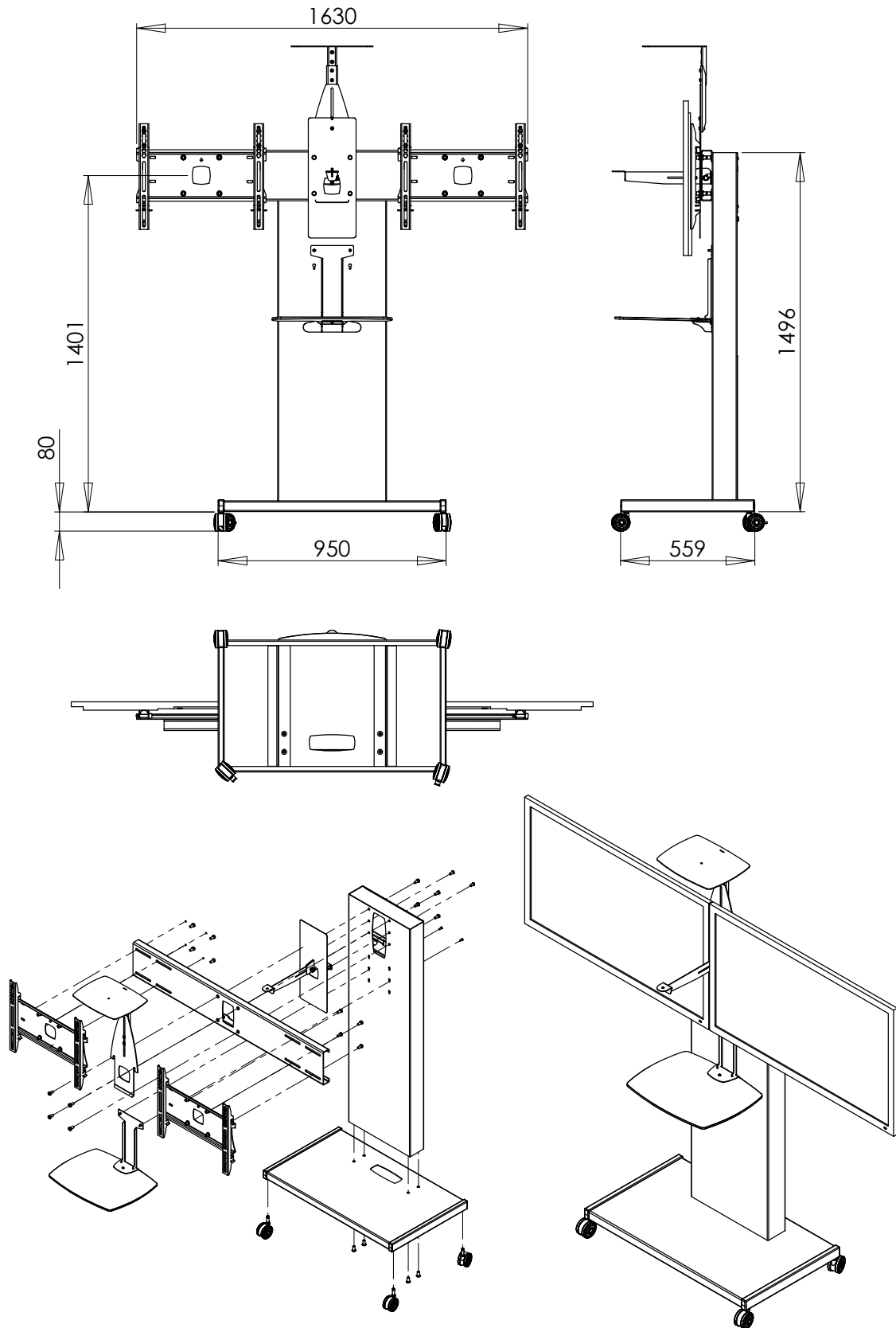
*RHCB1
Blade style
camera mount*



*RHGS2 wide
toughened
glass shelf*

* We offer a wide range of camera mount options. Our RHCC conversion shelf is also available in versions dedicated to specific cameras. Above screen camera mounts also available –Call us for details.

RHOBUS



UNICOL®



www.unicol.com

