

# BRAVIA Professional 4K LED TV

Professional LED TV

FWD-55X8600P

FWD-65X8600P

FWD-85X9600P



4K

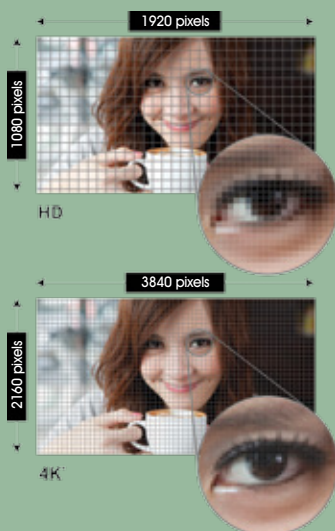


TRILUMINOS  
DISPLAY

## Key Feature

### Fantastic 16:9 4K resolution (3840 x 2160 pixels)

The FWD-55X8600P, FWD-65X8600P and FWD-85X9600P produce over 8 megapixels. That's four times the resolution of Full HD, for a level of realism audiences will almost want to reach out and touch.



### 4K Next generation picture quality

Bring the incredible depth and quality of 4K resolution to your business with our BRAVIA Professional 4K LED TV, now available in 85", 65" and 55" screen sizes.

### Professional design

The FWD-55X8600P, FWD-65X8600P and FWD-85X9600P offer all the technological performance and style you'd expect from BRAVIA. The 4K LCD panel produces four times the pixels of Full HD for outstanding picture quality, while the ultra-slim design enhances any corporate or retail environment.

### Simple, flexible

Standard mountings for installation plus straightforward operation and controls mean that a BRAVIA Professional 4K LED TV integrates easily into any environment. Customise and store preferred settings with Hotel Mode, and copy them from display to display via USB memory.

### Optimal controls and signage creation

Each display includes USB playback, IP control, RS232C control (with optional accessory CBX-H11/1), Hotel Mode and web-friendly HTML5 for easy digital signage creation.

## Features

**4K****16:9 4K resolution (3840 x 2160 pixels)**

With over 8 million pixels, a 4K resolution screen offers four times the detail of Full HD. Combined with the ability to manage 4K 60P (YCbCr4:2:0 8bit), it now produces a level of detail and realism beyond anything you've seen before.

**4K X-Reality PRO****4K X-Reality PRO for short viewing distance**

This high picture quality engine takes Full HD content much, much closer to 4K Ultra HD quality. Whether it's a presentation to clients or engaging digital signage, you'll get the best picture possible.

**TRILUMINOS™ Display technology**

Our unique TRILUMINOS™ technology uses a much broader colour range, reproducing colours as vivid and intense as they are in real life. It creates truer, deeper, more natural shades and hues, including hard-to-reproduce reds, greens and blues.

**Energy-efficient Edge LED Backlight**

The panel's LED backlight consumes less power than conventional fluorescent backlighting, reducing your running costs and allowing for an ultra-slim profile.

**Versatile control options**

Control BRAVIA remotely – including on/off, input signal select and adjust volume – over IP via RJ45 by web API or via RS-232C (RS-232C control requires optional HDMI convertor box CBX-H11/1).

**Installation friendly**

The slim, stylish display offers a wide range of mounting options and integrates neatly into any corporate, retail or educational environment.

**Hotel Mode**

Customise and store display settings and features, then copy them easily from display to display via USB flash memory.

**Integrated media player**

Play videos and other media content including 4K direct from USB flash memory or live streaming in a wide range of formats. NTFS file system is supported alongside FAT32 and exFAT.

**Internet ready**

Ethernet connector and built-in Wi-Fi allow easy wired or wireless Internet connection.

**Mirror your smartphone on your TV**

Just tap the one-touch remote with your NFC one-touch mirroring enabled smartphone to view videos, photos, apps and more on your TV, instantly.

**Control it with your smartphone**

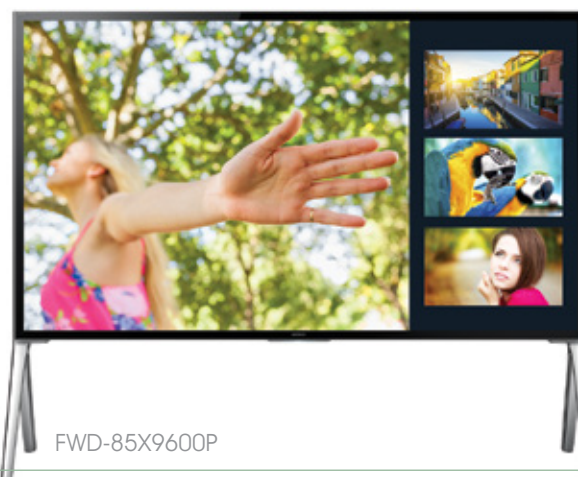
With one-touch mirroring you can also use your smartphone to swipe, enlarge, move and select content on the big screen for all to see.

**Built-in HTML5 for dynamic box-free signage**

With BRAVIA Professional's built-in HTML5 browser you can create your own digital signage content, as well as send it to displays across the globe. You can include text, graphics, video and even live web feeds – with no dedicated hardware player needed.

**Interactivity options**

Turn your BRAVIA Professional display into an interactive touchscreen with U-Touch overlays. Designed to fit seamlessly onto the BRAVIA screen, it's easy to set up and allows 6 multi-touch points for greater interaction. Contact your local Sony dealer for more information.



FWD-85X9600P



**Ideal for:**

- Corporate presentation
- Digital signage
- Video conferencing
- Education



Bring the incredible depth and quality of 4K resolution to your business

**PrimeSupport**

All Sony Bravia Professional displays sold into the EU, Norway and Switzerland come supplied with a 3 Year PrimeSupport pack, offering unique services and benefits, including:

- Freephone telephone helpdesk support (00 800 7898 7898) in 5 languages.

- Collection, repair and return anywhere in the EU, Norway and Switzerland.

In addition, optional PrimeSupport Plus packs can be purchased to add a 2 year extension of the standard 3 year PrimeSupport and to give long-term assurance

of expert support, technical assistance and repairs for 5 years from purchase date.



## Specifications

		FWD-55X8600P	FWD-65X8600P	FWD-85X9600P
TV system	(Terrestrial/ Cable/Sat)	DVB-T2/C/S2		
	Number of Tuners	1 (Digital/Analog) / 1 (Sat)		
Display Features	Dimming Type	Frame Dimming		Local Dimming
	TRILUMINOS™ Display	Yes		
	Display Device	LCD		
	Backlight Type	LED		
Display Specs	Screen Size (measured diagonally)	55" (54.6")	65" (64.5")	85" (84.6")
	Screen Size (cm)	138.8 cm	163.9 cm	214.8 cm
	Dynamic Contrast Ratio	over 1 million		
	Viewing Angle (Right/ Left/Up/Down)	178 (89/89/89/89)		176 (88/88/88/88)
	Display Resolution	4K (3840x2160)		
	Aspect Ratio	16:9		
Video Specs	Wide Mode	Full/Normal/Wide Zoom/Zoom/Caption/14:9 for Video		
	4:3 Default	Yes		
	Video Processing	4K X-Reality PRO		
	Motionflow	Motionflow XR 200 Hz		Motionflow XR 800 Hz
	Video Signal	<b>HDMI only:</b> 3840x2160/24p, 3840x2160/25p, 3840x2160/30p, 4096x2160/24p, 1080/24p, 480/60i, 480/60p, 576/50i, 576/50p, 720/60p, 720/50p, 1080/30p, 720/30p, 720/24p, 3840x2160/50p (YCbCr4:2:0 8bit) 3840x2160/60p (YCbCr4:2:0 8bit)		
		<b>HDMI/Component:</b> 1080/60i, 1080/60p, 1080/50i, 1080/50p		
3D Features	3D Format Support	Yes (Full HD)		
	3D Sync Transmitter Integrated	Not required		Yes
	3D	Passive		Active
Audio Specs	Speaker Position	Down Firing		
	Audio Power Output	10W + 10W		10W + 10W + 10W + 10W
Network Features	Invisible Speaker	Yes		
	Skype™	Ready		
	Wi-Fi Direct	Yes		
	Wi-Fi Certified	Yes		
	Opera Apps (System)	Yes		
	One-touch mirroring	Yes		
	Screen mirroring	Yes		
	TV SideView™	Yes		
	Internet Browser	Yes (Opera)		
Convenience Features	Wireless LAN	Integrated		
	Twin Picture	PAP (Variable)		
	USB Play (Contents)	MPEG1/MPEG2PS/MPEG2TS/AVCHD/MP4Part1 0/MP4Part2/ AV(XVID)/AVI(MotionJpeg)/MOV/WMV/MKV/WEBM/3GPP/MP3/WMA/ WAV/JPEG/MPO <b>55X8 and 65X8 only:</b> RAW(ARW)		
	i-Manual	Yes		
	On Screen Clock	Yes		
	Sleep Timer	Yes		
	USB Play	Yes (USB viewer supports FAT16, FAT32, exFAT and NTFS file systems.)		
	Multiple Language Display	Bulgarian/Catalan/Czech/Danish/German/Greek/English/Spanish/ Estonian/Finnish/French/Hebrew/Croatian/Hungarian/Italian/kazakh/ Lithuanian/Latvian/Dutch/Norwegian/Polish/Portuguese/Romanian/ Russian/Slovak/Slovenian/Serbian/Swedish/ Turkish/ Ukrainian		
	Light Sensor	Yes		
General Features / Specs	Dynamic Backlight Control	Yes		
	Power Saving Mode/ Back Light Off Mode	Yes		
	Hotel Mode Menu	Yes		
	VESA® Hole Spacing Compatible	30.0 x 30.0 cm	40.0 x 30.0 cm	40.0 x 40.0 cm
	Stand Swivel	-		
Control Features	IP Control	Yes (by WEBAPI)		
	RS-232C Control	Yes (by CBX-H11/1 optional accessory)		

		FWD-55X8600P	FWD-65X8600P	FWD-85X9600P
Inputs and Outputs	MHL	Yes		
	RF Connection Input(s)	1 (Side)		
	IF (BS/CS) Input(s)	2 (Side)		
	Composite Video Input(s)	1 (Rear Hybrid w/Component)		
	SCART (without Smartlink)	1 (Rear)		
	HDMI™ Connection(s) (Total)	4 (Side)		
	Analog Audio Input(s) (Total)	2 (Rear)		
	Digital Audio Output(s)	1 (Rear)		
	Audio Out	1 (Side/Hybrid w/Headphone)		
	USB	3 (Side)		
	Ethernet Connection(s)	1 (Rear)		
	HDMI™ PC Input	Yes		
Power	Power Requirements	AC 220-240V / 50Hz		
	Power Consumption (in Operation)	Vivid : 282W / Standard : 139W	Vivid : 310W / Standard : 157W	Vivid : 550W / Standard : 320W
	Power Consumption (in Standby)	0.3W		
Measurements (Approx.)	TV only (W x H x D) (Approx.)	Approx. 123.2 x 74.1 x 6.6 (2.79) cm	Approx. 144.8 x 86.5 x 6.6 (2.79) cm	Approx. 195.4 x 115.0 x 10.3 (7.60) cm
	TV with Stand (W x H x D) (Approx.)	Approx. 123.2 x 78.5 x 28.5 cm	Approx. 144.8 x 91.0 x 28.5 cm	Approx. 195.7 x 121.4 x 45.2 (59.1) cm
	Package Carton (W x H x D) (Approx.)	Approx. 132.9 x 82.9 x 19.8 cm	Approx. 154.6 x 95.2 x 19.8 cm	Approx. 209.0 x 139.7 x 62.1 cm
Weights (Approx.)	TV only (Approx.)	Approx. 23.5 Kg	Approx. 32.7 Kg	Approx. 70.8 Kg
	TV with Stand (Approx.)	Approx. 24.1 Kg	Approx. 33.3 Kg	Approx. 73.7 Kg
	Gross (Package Carton) (Approx.)	Approx. 32.0 kg	Approx. 42.0 kg	Approx. 105.0 kg
Supplied Accessories	One-touch Remote Control	RMF-ED004		
	Remote Control	RM-ED060		
	3D Glasses	TDG-500P x2		TDG-BT400A x2
	AC Power Cord	Pigtail		C17
	Screws	Yes		
	Operating Instructions	GB,FR,DE,NL,ES,PT,IT,DK,NO,SE,FI,PL,CZ,SK,HU,RO,BG,GR,TU,RU,UA		

### Optional accessory:



**RS-232C/HDMI converter  
CBX-H11/1**

For full features visit [www.pro.sony.eu/bravia-display](http://www.pro.sony.eu/bravia-display)

© 2014 Sony Corporation. All rights reserved. Reproduction in whole or in part without permission is prohibited. Features and specifications are subject to change without notice. All non-metric weights and measurements are approximate. 'Sony' and 'BRAVIA' are registered trademarks or trademarks of Sony Corporation. All other trademarks are the property of their respective owners.

Distributed by



Sony is the leading supplier of AV/IT solutions to businesses across a wide variety of sectors including, **Media and Broadcast, Video Security, Medical, Digital Cinema and Displays**. It delivers products, systems and applications to enable the creation, manipulation and distribution of digital audio-visual content that add value to businesses and their customers. With over 25 years' experience in delivering innovative market-leading products, Sony is ideally placed to deliver exceptional quality and value to its customers. Collaborating with a network of established technology partners, Sony delivers end-to-end solutions that address the customer's needs, integrating software and systems to achieve each organisation's individual business goals. For more information please visit [www.pro.sony.eu](http://www.pro.sony.eu)

Follow us on Twitter at [@SonyProEurope](https://twitter.com/SonyProEurope) / [www.twitter.com/sonyproeurope](https://www.twitter.com/sonyproeurope)

HCT\_BRAVIA\_PR\_DISPLAYS\_FWD55/65/85\_Datasheet\_J2865\_UK\_22/05/14\_V1

**SONY**