









## EX536

DLP® Projector

Making **projection**  
come **alive**

-  Bright projection – 2800 ANSI Lumens
-  XGA resolution, 3000:1 contrast ratio for sharp, detailed presentations and graphics
-  Energy saving <1W standby mode
-  Security bar and password protection for added security
-  RS232 for meeting room control systems
-  Low ownership costs – up to 4000hrs lamp life
-  Portable – carry bag provided for easy transportation
-  DLP® filter-free design – Virtually no maintenance



## Interact with your audience

From boardroom to classroom, the EX536 delivers bright, high contrast presentations and images with crystal clarity. Vibrant, life-like colours using BrilliantColor™ technology will ensure your audience is left speechless every time the EX536 is turned on.

The environmentally friendly EX536 has energy saving features including <1W standby mode. Long lamp-life of 4000hrs combined with our unique Optoma Colour and Imager guarantees saves you both time and money whilst ensuring hassle-free, long lasting projection.

### CLEAR, FOCUSED IMAGES

DarkChip3™ technology from Texas Instruments produces a stunning 3000:1 contrast ratio for pin sharp graphics and crystal clear text. Crisper whites, ultra-rich blacks makes images come alive and text easier to read - ideal for business and education presentations.



1000:1 contrast ratio

3000:1 contrast ratio

\*Simulated Image

### AMAZING COLOURS

The EX536 incorporates BrilliantColor™ technology to produce stunningly bright images with perfectly balanced life-like colours.

Preset display modes allow you to achieve a perfect image on a variety of surfaces including screens and interactive whiteboards.

### COLOUR AND IMAGE PERFORMANCE

**Optoma guarantees colour quality will remain as new for 5 years\***

Once you've purchased the EX536, Optoma guarantees that the colours will not fade and the image performance will not degrade for a minimum of 5 years.



**Interact with your students  
in the classroom**

### MAINTENANCE FREE = LOWER TOTAL COST OF OWNERSHIP (TCO)

DLP® technology ensures lower cost of ownership, longer life and improved reliability compared to other technologies.

The filter-free projector design means no more regular filter cleaning or replacements, saving you time and money.



## TIME AND ENERGY SAVINGS

The EX536 incorporates energy saving features to conserve power and extend the lamp life:



The timer control functions can automatically switch the projector off to standby mode <1W, conserving power and extending the lamp life to an astonishing 4000 hours\*\*.



It takes less than 10 seconds for the projector to power up and shutdown, so the EX536 not only saves time but energy too.

## CONTROL

The extensive RS232 command set makes it simple and easy to control the EX536 with any control system.



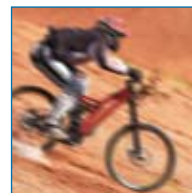
AMX Compatibility – Dynamic Discovery Protocol is incorporated into the EX536. This feature allows for easy installation with AMX control systems.

## SMOOTH, SEAMLESS PROJECTION

Even in the fastest moving scenes, the EX536 will project a smooth and seamless image. The rapid response of DLP® technology ensures that the projected movie or video game remains perfect and precise.



With



Without

## FEATURES

- 6 preset display modes
- Classroom mode - 1500 ANSI Lumens
- Quick keystone correction
- Security bar and password protection for added security
- Easy to use remote with direct source control



Enjoy big colourful presentations  
with the lights on



## EX536 SPECIFICATIONS

Native Resolution	XGA 1024 x 768
Compressed Resolution	UXGA (1600 x 1200)
Brightness	BRIGHT mode 2800 ANSI Lumens Classroom mode 1500 ANSI Lumens
Contrast	3000:1
Noise Level	28dB
Lamp Life**	4000/3000 (STD/BRIGHT mode)
Projection Lens	F/2.41~2.55; f=21.8~24mm, 1.1x Manual Zoom
Throw Ratio	1.95 - 2.15:1 (Projection Distance:Image Width)
Projection Distance	1.2 - 12m
Image Size	0.70 - 7.70m (27.49" - 303.12") Diagonal 4:3
Display Technology	Single 0.55" XGA DC3 DMD chip DLP® Technology by Texas Instruments
Weight / Dimensions (W x D x H)	2.3 kg / 286 x 192 x 84mm
Remote Control	Full function remote with direct source selecting
INPUTS	2 x 15 Pin D-Sub VGA (SCART & Component via adaptor) S-Video 4 Pin Mini Din Composite RCA 3.5mm Audio Mini Jack
CONTROL	RS232 - 3 Pin D-sub
OUTPUT	15 Pin D-Sub VGA Stereo Audio Mini Jack
Audio	2W Speaker
Aspect Ratio	4:3 Native, 16:9 Compatible
Keystone Correction	± 40° Vertical
On Screen Display	18 Languages: English, German, French, Italian, Spanish, Portuguese, Polish, Dutch, Russian, Finnish, Swedish, Greek, Norwegian, Danish, Hungarian, Czech, Turkish & Arabic
Video Compatibility	PAL SECAM 576i/p, NTSC 480i/p, HD 720p/1080i/1080p
Uniformity	85%
Displayable Colours	1.07 Billion
Horizontal Scan Rate	15.3 - 91.1kHz
Vertical Scan Rate	24 - 85Hz
Power Supply	100 - 240V, 50 - 60Hz
Power Consumption	233W BRIGHT mode < 1W Standby mode 207W STD mode < 1W Standby mode
Operating Conditions	Operating: 5 - 40°C, 85% Humidity (Max), 3000m Altitude (Max)
Security	Security Bar, Kensington Lock Port, Password Protection
Standard Accessories	Soft Carry Bag, Lens Cover, AC Power Cord, VGA Cable, Full Function Remote, Batteries x 2, Quick Start Guide, CD User Manual, Warranty Card, WEEE Card
RoHS	Compliant
Lamp Warranty	6 months or 1000 hours - whichever comes sooner
Warranty	Warranty may vary by country. Please see <a href="http://www.optomaeurope.com">www.optomaeurope.com</a> or ask your local supplier for details
Colour Guarantee*	5 Years
Imager Guarantee***	5 Years

## EASY TO USE REMOTE CONTROL

## EX536 Remote Control

- 1 Vertical Keystone Correction
- 2 Volume Control
- 3 Brightness Adjustment
- 4 Contrast Adjustment
- 5 AV Mute
- 6 Direct Input Source Selection

## EX536 Connections

- 7 VGA 2
- 8 VGA 1 - SCART & Component
- 9 S-Video
- 10 Composite Video
- 11 RS232 - 3 Pin
- 12 VGA Out
- 13 Audio Out
- 14 Audio In
- 15 Kensington™ Lock
- 16 Security Bar



## Exceptional Connectivity/ Multiple Terminals



Easy to use remote  
with buttons to  
change the input  
sources



## EX536 Projection Distance 1.2 - 12m (4:3 Aspect Ratio)

Projection Distance (m)	Max. Horizontal Image Size (m)	Min. Horizontal Image Size (m)	Max. Vertical Image Size (m)	Min. Vertical Image Size (m)	Max Diagonal Image Size (m)	Max Diagonal Image Size (inch)	Max. Image Offset (m)
1.20	0.62	0.56	0.46	0.42	0.77	30.31	0.07
2.00	1.03	0.93	0.77	0.70	1.28	50.52	0.12
2.50	1.28	1.16	0.96	0.87	1.60	63.15	0.14
3.00	1.54	1.40	1.16	1.05	1.92	75.78	0.17
4.00	2.05	1.86	1.54	1.40	2.57	101.04	0.23
5.00	2.56	2.33	1.93	1.75	3.21	126.30	0.29
6.00	3.08	2.79	2.31	2.10	3.85	151.56	0.35
7.00	3.59	3.26	2.70	2.45	4.49	176.82	0.40
8.00	4.10	3.72	3.08	2.80	5.13	202.08	0.46
9.00	4.62	4.19	3.47	3.15	5.77	227.34	0.52
10.00	5.13	4.65	3.86	3.50	6.42	252.60	0.58
11.00	5.64	5.12	4.24	3.85	7.06	277.86	0.64
12.00	6.15	5.58	4.63	4.20	7.70	303.12	0.69

For guide purposes only

EX536 is capable of 16:9 aspect ratio projection. When projecting a 16:9 image the image sizes, screen height and offset information will differ from the above.

**Optoma Europe Ltd.**  
42 Caxton Way, Watford Business Park, Watford, Hertfordshire, UK. WD18 8QZ  
**[www.optoma.co.uk](http://www.optoma.co.uk)**

**Panoview**  
Optoma recommended Screens  
[www.panoview.eu](http://www.panoview.eu)



\*Optoma guarantees that in normal use, Optoma DLP® colour quality will be indistinguishable from when new. Please note that worn lamps will give slight variance. Exclusions: (1) Guarantee is voided if the projector is subject to damage through mis-use. (2) Guarantee may be void in industrial or commercial entertainment environments where dust or smoke is particularly excessive (3) Guarantee will not apply if lamp brightness is below 50% due to wear or if the projector is not working due to other fault.

\*\*Typical lamp life achieved through testing. Will vary according to operational use and environment conditions. \*\*\* Optoma guarantees that in normal use, the DLP® imager guarantee will retain quality for at least 5 years providing consistent pixel performance. Exclusions: (1) Guarantee is voided if the projector is subject to damage through mis-use. (2) Guarantee may be void in industrial or commercial entertainment environments where dust or smoke is particularly excessive.

Copyright © 2009, Optoma Europe Ltd. All other product names and company names used herein are for identifications purposes only and may be trademarks or registered trademarks of their respective owners. Errors and omissions excepted, all specifications are subject to change without notice. DLP®, BrilliantColor™ and the DLP logo are registered trademarks of Texas Instruments.