

XD560U, WD570U

A Perfect Solution for Education and Business



User-friendly

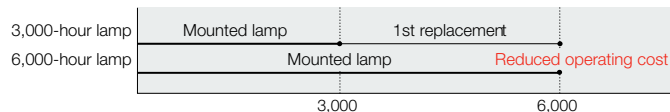
The XD560U and WD570U create a new intermediate category in Mitsubishi Electric's line-up of high-performance portable projectors. With a focus on ease of use; an advanced user-friendly display has been designed to ensure convenience and simplicity. USB and internet ports have also been included for a hassle free, direct connection to video sources, making these projectors ideal for use in classrooms and meeting rooms.



Manufacturing Products that Minimize Environmental Impact

Long Lamp Life – up to 6000 hours

A maximum lamp life of up to 6000 hours has been achieved by incorporating a lamp temperature controlling system. This results in the overall reduction of both operating and maintenance costs.



- Service life may vary widely depending on usage and operating environment and conditions, as well as users' adherence to the maintenance and cleaning procedures provided in the user manual.

Auto Power Off

When no input signal is received for a set period of time*, power is automatically turned off, reducing unnecessary power consumption.

*Time preset by user

Stand-by Mode Under 0.5W

Stand-by (low) mode power consumption is less than 0.5W, offering increased energy savings and further contributing to environmental preservation.

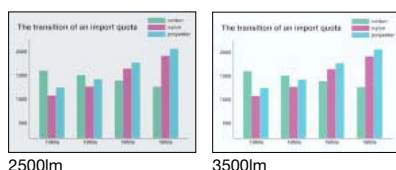
Brighter display solutions



Presentation

3500 ANSI lumens (XD560U, WD570U)

An impressive 3500lm helps to ensure the projection of bright, crystal clear images.



*Image brightness comparison

3000:1 Contrast Ratio

The DLP™ chip line-up has been enhanced by the introduction of the Dark chip3™. Stray-light processing has been optimized for the optical system, achieving a high contrast of 3000:1 and ensuring the display of sharp, vivid images.



3D READY – Enjoy the future today

Experience the impact and allure of 3D images. The 3D video content must be in field sequential format and special electronic shutter glasses are required.

User friendly

Ultra Quiet 28dB Operation

Fan noise during projector operation can be distracting during a presentation or video conference. The XD560U and WD570U projectors operate at a significantly low noise level of only 28dBA eliminating fan noise interruption.



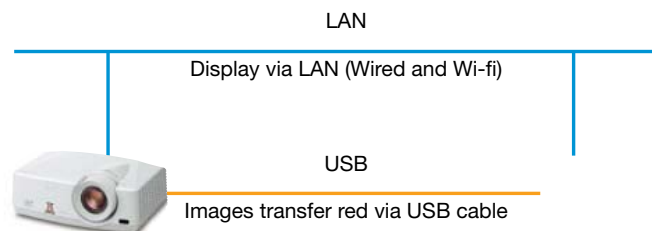
Top-loading lamp

A lamp replacement attachment is included to prevent the lamp from being dropped during replacement.

Network

USB Display/LAN Display

A VGA cable, USB cable, LAN cable or commercially available wireless dongle can be used to reproduce images from a computer. For displaying images via a LAN, up to four computers can be connected to one projector. The projection screen can be divided into quarters, reproducing all computer screens simultaneously.



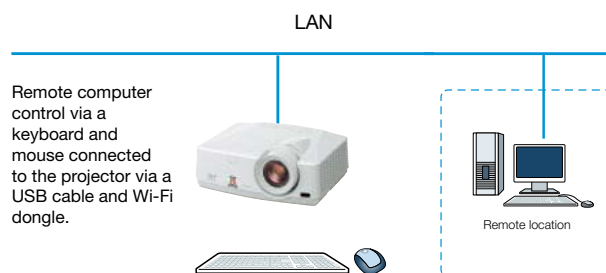
Notes:

- 1) Only one optional USB Type-A port from a computer can be directly connected to a projector. Multiple connections using a USB hub is not possible.
- 2) For displaying images via a LAN, network settings are required.
- 3) Not all USB dongles are compatible.



Remote desktop

When using the LAN Display function, a USB mouse or USB keyboard can be connected to the projector enabling direct access to a computer utilizing the Internet or other application.

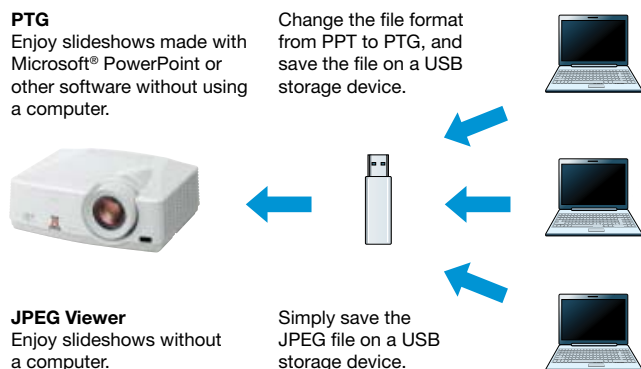




Computer-free Presentations (PTG file/JPEG Viewer)

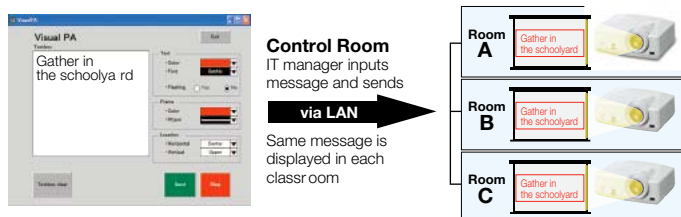
Using "PTG Converter", PowerPoint files can be converted into a special format and saved on a USB storage device. When the USB device is connected to the projector, users can replay slideshows or animation effects using only the projector.

Note: The types of slideshows and animation effects that can be replayed are limited. JPEG files saved on a USB storage device can be projected in slideshow style. Note: Only compatible with JPEG files.



Simultaneous Message Display (Visual PA)

Using a control room computer equipped with projector-control software, administrators can simultaneously send messages (up to 390 characters long) in real-time to projectors connected to the LAN. Ideal for broadcasting important information to multiple rooms in the school or building.



Network Connectivity

Projectors are equipped with a RJ-45 LAN terminal for remote operation. Additionally, when used with Crestron® Room View®, integrated control of up to 250 projectors including power on/off

control, message display and confirmation of lamp service hours is possible using RoomView™/ e-Control™. Both projectors are equipped with AMX Device Discovery for simplified device management and compatible with PLink™.

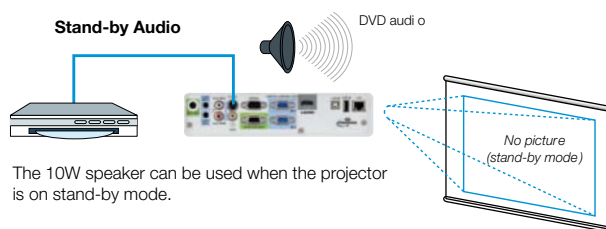


PJ Link is a registered trademark or trademark registration has been submitted in Japan, the United States and other countries/regions.

Audio

Stand-by Audio/Audio Pass-through

When the projector is in stand-by mode, its 10W speaker can still be used. Additionally, while in stand-by mode, an external speaker can be used by connecting it via the Audio Out terminal.

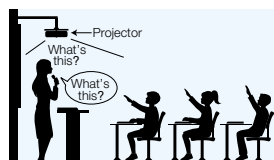


The 10W speaker can be used when the projector is on stand-by mode.

In addition, audio can be output when the projector is in stand-by-mode, using projector as an amplifier.

Excellent Sound Projection (10W Speaker+Audio Mix)


Eliminating the need for an external speaker, the XD560U and WD570U come built with a 10W speaker. Utilising the "Audio mix" feature and a wireless microphone (sold separately), the presenters voice is clear and loud for precise audio reproductions.



*Only compatible with stereo mini-jack Not compatible with RCA jack (L/R) or HDMI.*10W speaker and external speaker cannot be used at the same time.

NEW

XD560U
WD570U



XD560U WD570U

Brilliant Colour™	Colour Enhancer	Wall Screen	10W Speaker	USB/LAN Display	Remote Desktop
Stand-by Audio	Audio Mix	Computer-free Presentations	Visual PA	Direct Power Off	Long-life Lamp
Low Stand-by Power	Top Loading Lamp	LAN (RJ-45)	HDMI	Closed Caption	Low Fan Noise

Picture Performance Presentation User-friendly

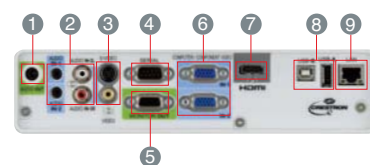
PICTURE BY DLP TEXAS INSTRUMENTS

DLP 3D READY

HDMI HIGH DEFINITION MULTIMEDIA INTERFACE

Input and Output Terminals

(WD570U/XD560U/XD550U)



- 1 Audio output
- 2 Audio input
- 3 S-Video/Video
- 4 Serial RS-232C
- 5 Monitor output
- 6 PC/Component video input
- 7 HDMI
- 8 USB
- 9 LAN (RJ-45)

Specifications

Model	XD560U	WD570U
Display technology	0.55" 1-Chip DMD	0.65" 1-Chip DMD
Resolution	1024 × 768 (Total 786,432 pixels)	1280 × 800 (Total 1,024,000 pixels)
Brightness	3500lm	3500lm
Contrast ratio	3000 : 1	3000 : 1
Picture size	40" – 300"	40" – 300"
Throw ratio	1.4 – 2.3	1.5 – 2.3
Source lamp	Normal Mode: 230W (Shut Off Time: 3000hrs), Low Mode: 190W (Shut Off Time: 6000hrs)	
PC compatibility	1024 × 768 – 1600 × 1200, 1080p Sync on Green available	1280 × 800 – 1600 × 1200, 1080p Sync on Green available
Video compatibility	NTSC / NTSC 4.43 / PAL (including PAL-M, N) / SECAM / PAL-60 Component Video; 480i/p (525i/p), 576i/p (625i/p), 720p (750p), 1080i/p (1125i/p 60Hz) 1080i/p (1125i/p 50Hz)	
Input terminals	RGB; mini D-sub 15pin × 2 Audio; Stereo mini jack (φ3.5mm) × 2 (one for PC1, another one for PC2) Video; RCA × 1 + S-VIDEO × 1 Digital; HDMI × 1 Video Audio; RCA jack (L/R) × 1	
Output terminals	RGB; mini D-sub 15pin × 1 Audio; Stereo mini jack (φ3.5mm) × 1	
Communication terminal	SERIAL; mini D-sub 9pin × 1 (RS232C) LAN (RJ-45); × 1 (Projector control, LAN Display) USB type-A; Wireless Display, Computer-free Presentation USB type-B; USB Display	
Audio speaker	10W Mono	
Dimensions (W x H x D)	325 × 113 × 258 mm	325 × 113 × 258 mm
Weight	3.5 kg (7.7 lbs)	3.8 kg (8.38 lbs)
Power requirements	AC 100 - 240V, 50/60Hz	
Optional lamp	VLT-XD560LP	

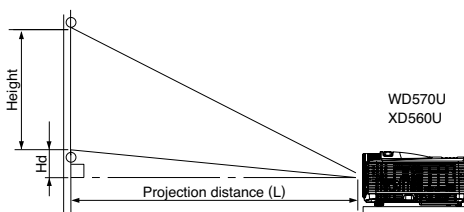
• Compliance with ISO21118-2005

Varies depended on condition:

- Lamp life specification is an estimate based on verification under proper conditions and is not the duration of the warranty. Lamp will shut-off automatically when usage reaches the specified estimated maximum lamp hours.
- Service life may vary widely depending on usage and operating environment and conditions, as well as users' adherence to the maintenance and cleaning procedures provided in the user manual.
- HDMI, the HDMI Logo, and High-Definition Multimedia Interface are trademarks or registered trademarks of HDMI Licensing LLC in the United States and other countries.
- All brand names and product names are trademarks, registered trademarks or trade names of their respective holders.

Screen Size and Projection Distance

Side view



The above numbers are approximate, and may be slightly different from the actual measurements.

Screen size chart (WD570U)

Diagonal size		Screen (16 : 10)		Height (H)		Distance from screen (L)				Height projected image (Hd)	
		Width (W)		Height (H)		Shortest (Wide)		Longest (Tele)		Height projected image (Hd)	
inch	cm	inch	cm	inch	cm	inch	m	inch	m	inch	cm
40	102	34	86	21	54	49	1.2	75	1.9	2.6	7
60	152	51	129	32	81	74	1.9	114	2.9	4.0	10
80	203	68	172	42	108	99	2.5	152	3.9	5.3	13
100	254	85	215	53	135	124	3.2	191	4.8	6.6	17
120	305	102	258	64	162	150	3.8	229	5.8	7.9	20
150	381	127	323	79	202	188	4.8	287	7.3	9.9	25
200	508	170	431	106	269	251	6.4	384	9.7	13.2	34
250	635	212	538	132	337	314	8.0	—	—	16.6	42
300	762	254	646	159	404	377	9.6	—	—	19.9	50

Screen size chart (XD560U)

Diagonal size		Screen (4 : 3)		Height (H)		Distance from screen (L)				Height projected image (Hd)	
		Width (W)		Height (H)		Shortest (Wide)		Longest (Tele)		Height projected image (Hd)	
inch	cm	inch	cm	inch	cm	inch	m	inch	m	inch	cm
40	102	32	81	24	61	45	1.1	73	1.9	3.6	9
60	152	48	122	36	91	67	1.7	110	2.8	5.4	14
80	203	64	163	48	122	90	2.3	148	3.8	7.2	18
100	254	80	203	60	152	113	2.9	185	4.7	9.0	23
120	305	96	244	72	183	136	3.4	222	5.6	10.8	27
150	381	120	305	90	229	170	4.3	278	7.1	13.5	34
200	508	160	406	120	305	227	5.8	371	9.4	18.0	46
250	635	200	508	150	381	284	7.2	—	—	22.5	57
300	762	240	610	180	457	341	8.7	—	—	27.0	69



for a greener tomorrow

Eco Changes is the Mitsubishi Electric Group's environmental statement, and expresses the Group's stance on environmental management. Through a wide range of businesses, we are helping contribute to the realization of a sustainable society.



MITSUBISHI ELECTRIC EUROPE

New publication, effective May 2011 Specifications subject to change without notice.

displays.mitsubishielectric.eu

Brighter display solutions

UK & Middle East + 44 1707 278 684
Germany + 49 2102 4860 9250

Benelux, Eastern Europe & Russia + 31 297 282 461
Spain + 34 935 653 131

France + 33 1 5568 5568
Sweden + 46 8625 10 00

Italy + 39 039 60531