

WD380U-EST XD360U-EST

Specifically Designed Ultra Short Throw Lens for High Impact Presentations

Specially Crafted Ultra Short Throw Lens

Conventional projectors need a significant amount of space to project onto large projector screens. This can cause problems when the projectors are placed in small rooms and people walk in front of the projection path, interrupting the view. Mitsubishi Electric's WD380U-EST and XD360U-EST mobile projectors are equipped with a specially crafted lens that provides one of the best short-throw-focus performance in the industry. Even in classrooms and meeting rooms with limited space, large-screen visual communication can be achieved. Presenters no longer need to worry about casting shadows.



displays.mitsubishielectric.eu

Brighter display solutions

UK & Middle East + 44 1707 278 684
Germany + 49 2102 4860 9250

Benelux, Eastern Europe & Russia + 31 297 282 461
Spain + 34 935 653 131

France + 33 1 5568 5568
Sweden + 46 8625 10 00

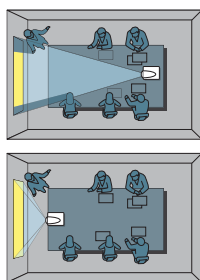
Italy + 39 039 60531

WD380U-EST XD360U-EST

Presentation

Impressive Presentations – One of the World's Shortest Focus Distances

Utilising a large-diameter lens and optimal optical engine design, one of the shortest focal distance (WD380U-EST throw ratio: 0.375) in the industry has been achieved*. Even if the teacher or presenter must move in front of the projected image, they are neither blinded nor disturbed by projector light, enabling them to maintain eye contact with the audience at all times.

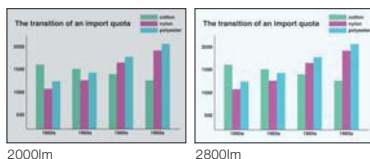


* XD360U-EST throw ratio: 0.469

Note: Data researched by Mitsubishi Electric in March 2011.

2800lm High Luminance (WD380U-EST)

The high 2800lm luminance (2500lm for XGA models) helps to ensure presentation images are clearly seen without lowering the light in the room.



* XD360U-EST: 2500lm

3000:1 High Contrast

Dark chip3 has recently been introduced to the DLP® chip line-up. Stray-light processing has been optimised for the optical system, achieving a high contrast of 3000:1. This makes it possible to reproduce sharp, vivid images in which sentences and other alphanumeric characters can be read easily.

3D READY – Enjoy the future today

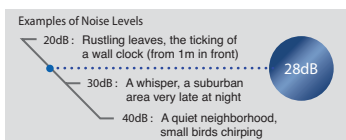


Experience the impact and allure of 3D images. The 3D video content must be in field sequential format and special electronic shutter glasses are required.

User Friendly

Ultra Quiet 28dB Operation

Fan noise during projector operation can be distracting during a presentation or video-conference. The WD380U-EST and XD360U-EST projectors operate at a significantly low noise level of only 28dB (low mode). As a result, presentations and conferences can be held without a distracting projector noise in the background.



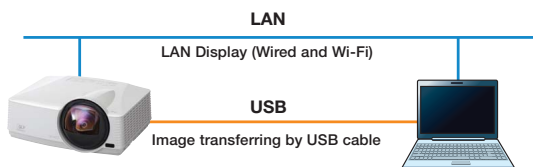
Top-loading lamp for easier maintenance



Network

USB & LAN Display

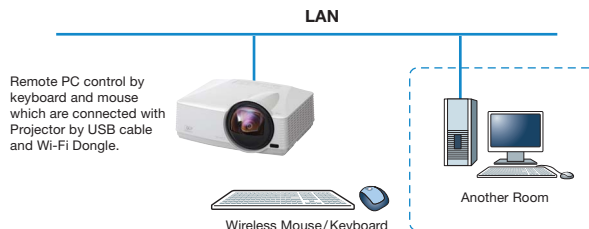
For enhanced functionality users can now reproduce images from a computer via a VGA cable, a USB cable, LAN cable or commercially available wireless dongles. For displaying images via a LAN, up to four computers can be connected to one projector and the screen can be divided into quarters with all four sources displaying simultaneously.



Notes: 1) Only one optional USB Type-A port from a computer can be directly connected to a projector. Multiple connections using a USB hub is not possible.
2) For displaying images via a LAN, network settings are required.
3) Not all USB dongles are compatible.

Remote Desktop

When using the LAN Display function, a USB mouse or USB keyboard can be connected to the projector enabling direct access to a computer where the internet is accessible.



Functionality without a PC

Using "PtG Converter", PowerPoint files can be converted into a special format and saved on a USB storage device. When the USB device is connected to the projector, it is possible to replay slideshows or animation effects using only the projector.

Note: The types of slideshows and animation effects that can be replayed are limited. JPEG files saved on a USB storage device can be projected in slideshow style. Only compatible with JPEG files.

PTG

You can enjoy slide show like Microsoft® PowerPoint® without PC.

Changing the file format from PPT to PTG. After that, save it in the USB memory.



JPEG Viewer

You can enjoy slide show without PC.

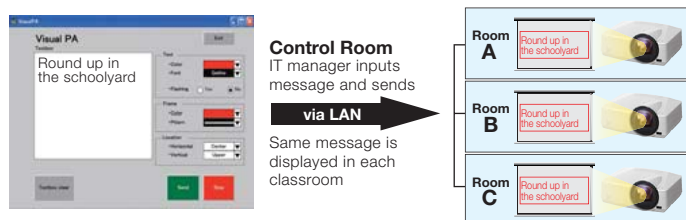
Just save the JPG picture in the USB memory





Simultaneous Message Display (Visual PA)

Using a control room computer equipped with projector-control software, it is possible to simultaneously send messages (up to 350 characters long) in real-time to projectors connected to the LAN. Ideal for broadcasting important information to multiple rooms in the school or building.



Network Connectivity

Projectors are equipped with a RJ-45 LAN terminal for remote operation. Additionally, when used with Crestron® Room View®, integrated control of up to 250 projectors including power on/off control, message display and confirmation of lamp service hours is possible using RoomView™/e-Control™. Both projectors are equipped with AMX Device Discovery for simplified device management and compatible with PJLink™.

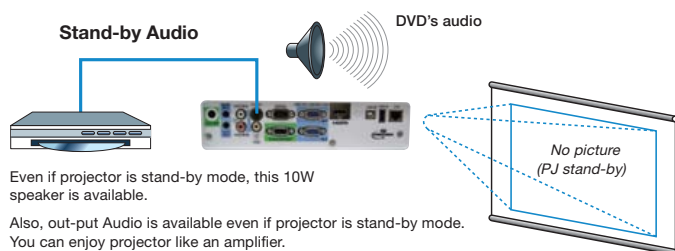
The trademark of PJLink is trademark applied for registration or registered trademark in Japan, the United States, and other countries and areas.



Audio

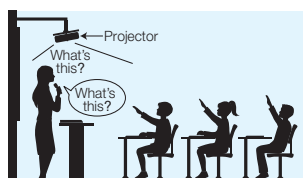
Stand-by Audio / Audio Pass-through

When the projector is in stand-by mode, its 10W speaker can still be used. Additionally, while in stand-by mode, an external speaker can be used by connecting it via the Audio Out terminal.



Excellent Sound Projection (10W Speaker + Audio Mix)

A high-volume, 10W speaker is built-in, eliminating the need for an external speaker. Using the "Audio Mix*" feature and wireless microphone sold separately, the presenter's voice is reproduced loud and clear in real time.



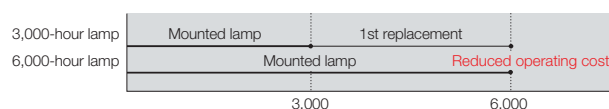
Only compatible with stereo mini-jack. Not compatible with RCA jack (L/R) or HDMI.

Ecology



6000-hour Long-life Lamp (max. use set to Low mode)

A longer service life for the projection lamp has been achieved by incorporating an optimal design for lamp temperature control. Benefits include substantial reductions in projector operating cost and the labour required for changing the lamp.



*Lamp life specification is an estimate based on verification under proper conditions and is not the duration of the warranty. Lamp will shut-off automatically when usage reaches the specified estimated maximum lamp hours. Service life may vary widely depending on usage and operating environment and conditions, as well as users' adherence to the maintenance and cleaning procedures provided in the user manual.



Boom Arm Bundle

Available as part of a special bundle, the WD380U-EST and the XD360U-EST can also be purchased with a specifically designed boom arm ideal for simple installation.



NEW

WD380U-EST
XD360U-EST

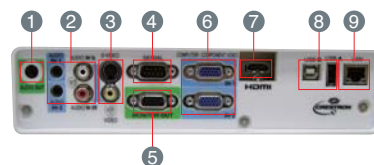


Brilliant Colour™	Colour Enhancer	Wall Screen	10W Speaker	User Logo Projection	Password Lock	Instant Shutdown
Long-life Lamp	Low Stand-by Power	Top/Side Loading Lamp	LAN (RJ-45)	HDMI	Closed Caption	Low Fan Noise
Picture Performance		Presentation		User-friendly		



Input and Output Terminals

(WD380U-EST/XD360U-EST)



- ① Audio output
- ② Audio input
- ③ S-Video/Video
- ④ Serial RS-232C
- ⑤ Monitor output
- ⑥ PC/Component video input
- ⑦ HDMI
- ⑧ USB
- ⑨ LAN (RJ-45)

		WD380U-EST	XD360U-EST
Display Technology		0.65" 1-Chip DMD, 12deg.LVDS, DDP2431	0.55" 1-Chip DMD, 12deg.LVDS, DDP2431
Resolution		1280 x 800 (Total 1,024,000 pixels)	1024 x 768 (Total 786,432 pixels)
Brightness		2800lm	2500lm
Contrast Ratio		3000:1	
Picture Size		70" -180"	60" -150"
Source Lamp		230W (3000hrs) with Standard Mode, 190W (6000hrs) with Low Mode	
PC Compatibility		Resolution; 640 x480 (Expand) - 1024 x 768 (Real) - 1600 x 1200 (Compressed),1080p (Compressed)	
Video Compatibility		NTSC / NTSC 4.43 / PAL (including PAL-M, N) / SECAM / PAL-60	
Input Terminals	RGB	Mini D-sub 15pin x 2	
	Audio	Stereo mini jack (3.5mm) x 2 (one for PC1, another one for PC2)	
	Video	RCA x 1 + S-VIDEO x 1	
	Digital	HDMI x 1	
	Video Audio	RCA jack (L/R) x 1	
Output Terminal	RGB	Mini D-sub 15pin x 1	
	Audio	Stereo mini jack (3.5mm) x 1	
Communication Terminal	SERIAL	Mini D-sub 9pin x 1 (RS232C)	
	LAN RJ-45	1 (Projector control, LAN Display)	
	USB type-A	Wireless Display, PC Less Presentation	
	USB type-B	USB Display	
Audio Speaker		10W Mono	
Dimension		325 x 113 x 258 mm (not included protrusion)	
Weight		4.2kg (9.26 lbs)	
Power requirements		AC 100 - 240 V, 50/60Hz	
Optional Lamp		VLT-XD560LP	



for a greener tomorrow

Eco Changes is the Mitsubishi Electric Group's environmental statement, and expresses the Group's stance on environmental management. Through a wide range of businesses, we are helping contribute to the realisation of a sustainable society.



MITSUBISHI ELECTRIC EUROPE

New publication, effective September 2011 Specifications subject to change without notice.

displays.mitsubishielectric.eu

Brighter display solutions

UK & Middle East + 44 1707 278 684
Germany + 49 2102 4860 9250

Benelux, Eastern Europe & Russia + 31 297 282 461
Spain + 34 935 653 131

France + 33 1 5568 5568
Sweden + 46 8625 10 00

Italy + 39 039 60531