

LG UHD Signage Captures Customer's Attention

The UH5F series is a UHD signage that has been optimized for various indoor environments. It features superior UHD quality, slim design, external dust protection, and various convenience for users.



Superb Picture Quality



Sleek and Practical Design



Product Reliability

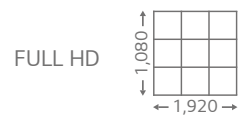


Easy Installation



ULTRA HD Resolution

With the resolution that is 4 times higher than FHD, it makes the color and details of the contents more vivid and realistic. In addition, the wide viewing angle applied with LG IPS Panel, provides clear contents with no distortion.



High Efficiency Video Coding

The UH5F series supports HEVC* which efficiently compresses/ decompresses high-capacity UHD contents, playing ultra-high quality videos with half the network traffic when compared to the existing H.264 codec.



H.264

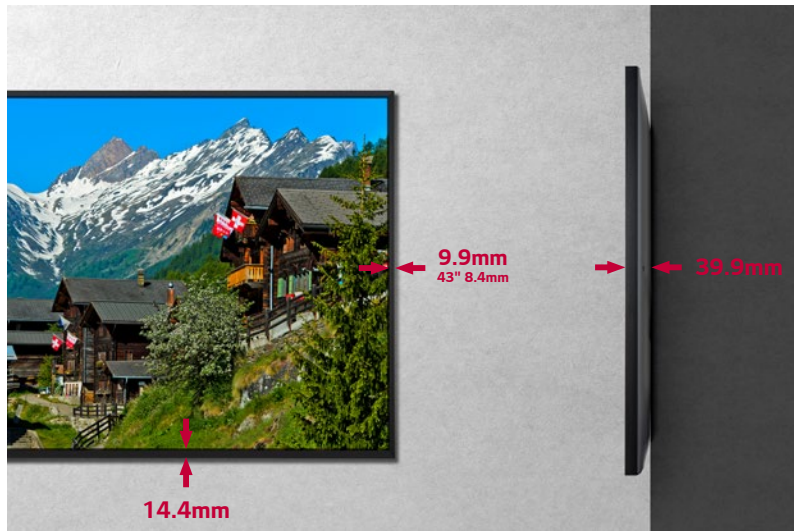


HEVC

* HEVC : High Efficiency Video Coding

Narrow Bezel & Slim Depth

The UH5F series has a smaller bezel size and thickness, which saves space and enables easy installation. In addition, it increases the immersive experience from the screen and provides a sophisticated design, improving the décor of the space where the product is installed.



Detachable Logo and Built-in Speaker

The UH5F series is equipped with a new transparent logo which is well organized with surroundings. Also, its removable feature gives users flexibility for installation. Contents will be enriched with sound effects from built-in speakers, without the need for purchasing or installing external speakers.



IP5x Certified Design

The IP5x Dust-Proof Certification ensures that the product is completely protected from dust, eliminating the risk of performance degradation.



30° Tilting Installation

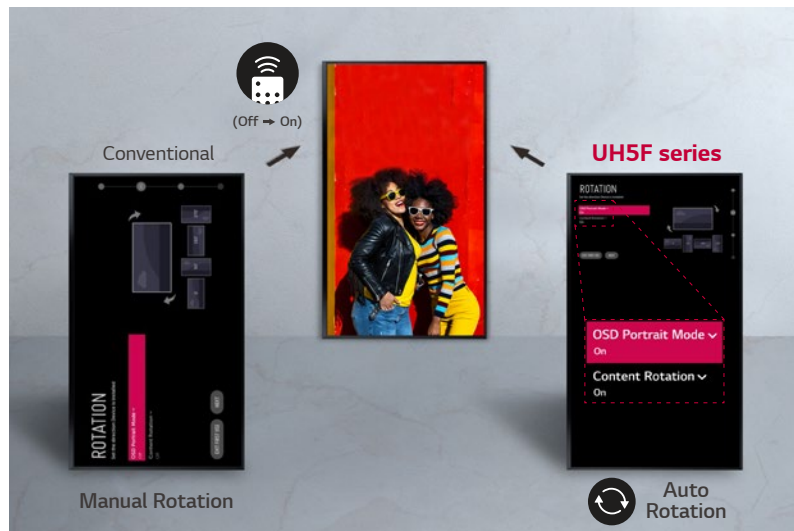
When a display is installed at high places, it is usually tilted for the user's comfort viewing. In consideration of this, the UH5F series supports the installation with 30 degrees of tilt*.



* Tilt installation of up to 30 degrees facedown is supported.
(in conditions within 30°C temperature, 50% humidity)

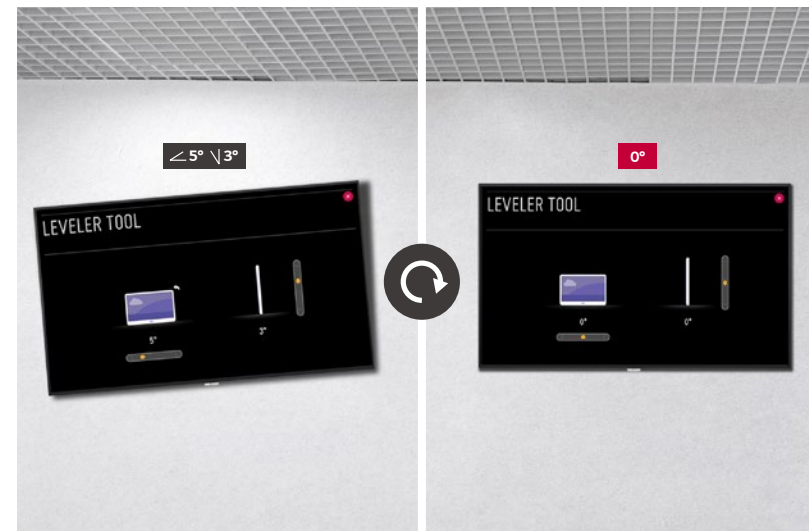
Auto Screen Rotation

The UH5F series automatically detects its orientation (landscape or portrait mode) in the initial installation step, so manual rotation set-up process isn't required. The direction of OSD and background contents will be already set when you turn on a display at first.



Fine Adjustment

The UH5F series is equipped with a "horizontal sensor" which shows users how the device is tilt, so that it can be precisely installed.



Remote Monitoring

The UH5F series can email notifications to users when there is a problem, such as tilting of the product by external impact, so users can operate the product in a safer manner as they can get the information about the problem right away.



Simple Accessibility

Unlike previous models where various buttons have to be pressed for control, the UH5F series provides a single joystick to easily facilitate power on/off, input/setting operation, volume control, etc.



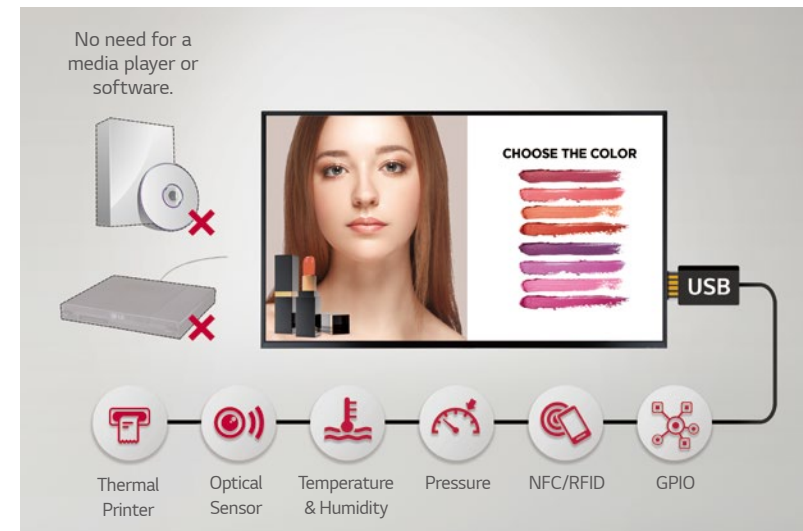
High-Performance with webOS

Built-in Quad Core SoC can execute several tasks at once while providing smooth content playback without the need for a media player. Also LG webOS platform enhances user convenience with intuitive GUI and simple app development tools.



Various Sensor Applications

LG webOS smart signage platform easily supports connections with external sensors such as GPIO, NFC/RFID, temperature sensors, etc, via USB plug-in. The overall cost for maintenance is reduced as there's no need to purchase additional software or media players for creating value-added solutions.



Compatibility with AV Control System

The UH5F series has been certified Crestron Connected® for high compatibility with professional AV controls to achieve seamless integration and automated control*, boosting business management efficiency.



* Network based control

Compatibility with Video Conference System

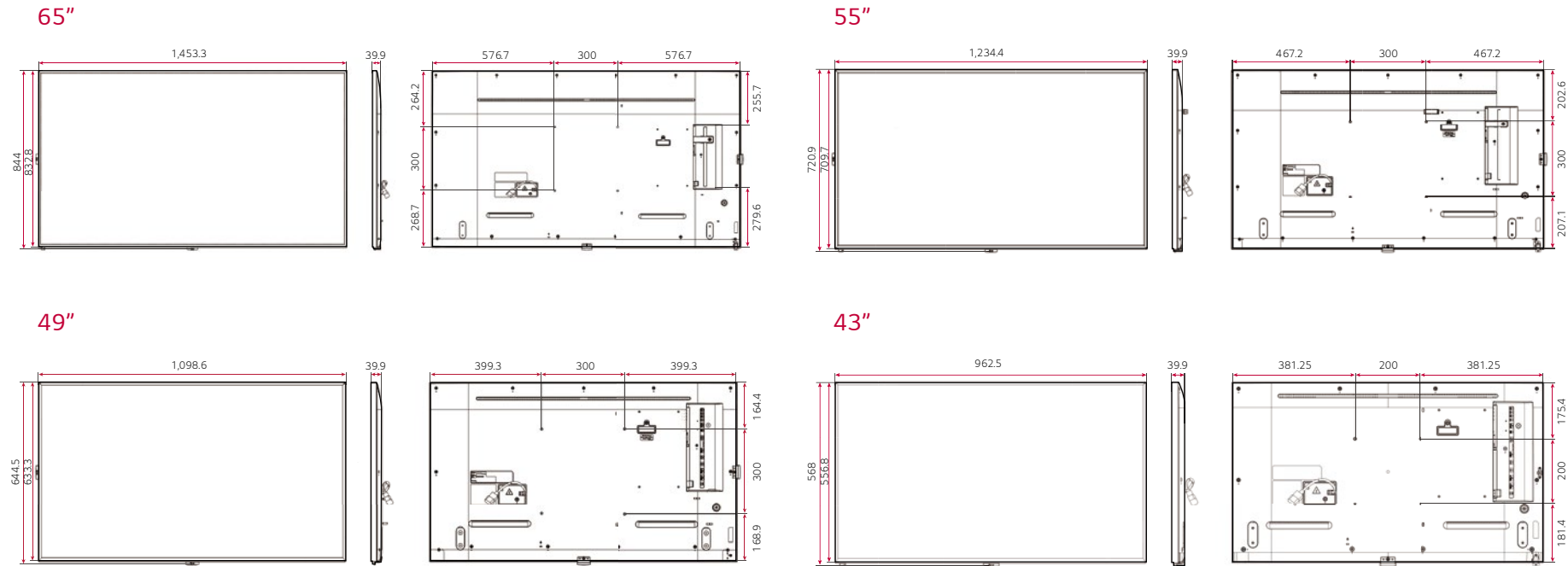
For the optimum visual meeting, the UH5F series has certified its compatibility with Cisco System that offers powerful and integrated control* for a smarter video conference, eliminating a waste of time for setting up the picture quality or changing input on incoming calls.



* Using an HDMI cable connection

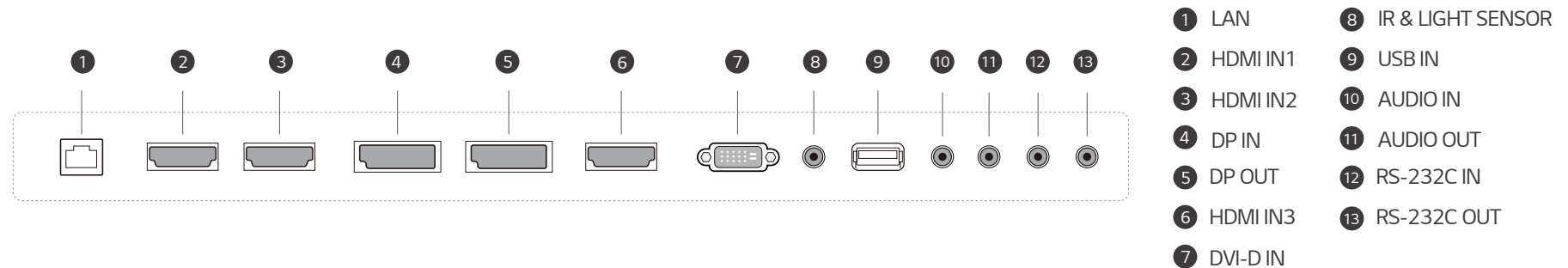
DIMENSION (unit: mm)

UHD Signage | UH5F Series



CONNECTIVITY

65\" | 55\" | 49\" | 43\"



* Dimensions & Jack Panels (Read/Side) may differ from the above image, so please contact LG sales team to verify before ordering.

SPECIFICATIONS

UHD Signage | **UH5F Series**

		65UH5F	55UH5F	49UH5F	43UH5F
Panel	Screen Size	65"	55"	49"	43"
	Panel Technology	IPS	IPS	IPS	IPS
	Aspect Ratio	16 : 9	16 : 9	16 : 9	16 : 9
	Native Resolution	3,840 x 2,160 (UHD, RGB)	3,840 x 2,160 (UHD, RGB)	3,840 x 2,160 (UHD, RGB)	3,840 x 2,160 (UHD, RGB)
	Brightness (Typ.)	500 cd/m²	500 cd/m²	500 cd/m²	500 cd/m²
	Contrast Ratio	1,100:1	1,100:1	1,100:1	1,100:1
	Viewing Angle (H x V)	178 x 178	178 x 178	178 x 178	178 x 178
	Response Time	8ms (G to G)	8ms (G to G)	8ms (G to G)	8ms (G to G)
	Surface Treatment (Haze)	Haze 3%	Haze 3%	Haze 3%	Haze 3%
	Life Time (Typ.)	50,000 Hrs	50,000 Hrs	50,000 Hrs	50,000 Hrs
Connectivity	Operation Hours	24 Hrs	24 Hrs	24 Hrs	24 Hrs
	Orientation	Portrait & Landscape	Portrait & Landscape	Portrait & Landscape	Portrait & Landscape
	Input	HDMI (3), DP, DVI-D, Audio, USB 2.0			
	Output	DP, Audio (Off/Fixed/Variable),			
Mechanical Specification	External Control	RS232C In/Out, RJ45 (LAN) In, IR In			
	Bezel Color	Black	Black	Black	Black
	Bezel Width	9.9mm(T/R/L), 14.4mm(B)	9.9mm(T/R/L), 14.4mm(B)	9.9mm(T/R/L), 14.4mm(B)	8.4mm(T/R/L), 14.4mm(B)
	Monitor Dimension (W x H x D)	1,453.3mm x 844mm x 39.9mm	1,234.4mm x 720.9mm x 39.9mm	1,098.6mm x 644.5mm x 39.9mm	962.5mm x 568mm x 39.9mm
	Weight (Head)	28.2 kg	19.0 kg	15.4 kg	11.2 kg
	Carton Dimensions (W x H x D)	1,600mm x 970mm x 175mm	1,360mm x 810mm x 175mm	1,197mm x 740mm x 162mm	1,052mm x 660mm x 152mm
	Packed Weight	35.0 kg	24.2 kg	18.8 kg	13.7 kg
	Handle	No	No	No	No
Key Feature	VESA™ Standard Mount Interface	300 x 300	300 x 300	300 x 300	200 x 200
	Internal Memory 8GB (System 4GB + Available 3.6GB), Built-in Wi-Fi, Built-in Speaker, Temperature Sensor, Auto Brightness Sensor, Acceleration Sensor, Local Key Operation, Embedded CMS (USB Auto Playback, Local Contents Scheduling, Group Manager), Fail over, Image Customization (Bootimg Logo, No Signal), Content Sync (RS232C, Local Network), PIP/PBP(4), Screen Share, Video Tag(4), Play via URL, OSD Rotation, Tile Mode Setting (Max. 15 x 15), Setting Data Cloning, Firmware Update by Network, SNMP 2.0, ISM Mode, Crestron Connected®(1), DPM, Smart Energy Saving, Wake on LAN, Beacon, HDMI-CEC(2), SI Server Setting				
Special Feature	Tilt (Facedown) ¹⁾	Max. 30°	Max. 30°	Max. 30°	Max. 30°
	IP Rating	IP5x	IP5x	IP5x	IP5x
Environmental Conditions	Operation Temperature	0°C to 40°C	0°C to 40°C	0°C to 40°C	0°C to 40°C
	Operation Humidity	10% to 80%	10% to 80%	10% to 80%	10% to 80%
Power	Power Supply	100-240V~, 50/60Hz	100-240V~, 50/60Hz	100-240V~, 50/60Hz	100-240V~, 50/60Hz
	Power Type	Built-In Power	Built-In Power	Built-In Power	Built-In Power
	Power Consumption	Typ. / Max. 120W (TBD) / 165W (TBD)	105W (TBD) / 145W (TBD)	95W (TBD) / 130W (TBD)	75W / 110W
	Smart Energy Saving	90W (TBD)	80W (TBD)	70W (TBD)	55W
Certification	Safety	IEC 60950-1 / EN 60950-1 / UL 60950-1	IEC 60950-1 / EN 60950-1 / UL 60950-1	IEC 60950-1 / EN 60950-1 / UL 60950-1	IEC 60950-1 / EN 60950-1 / UL 60950-1
	EMC	FCC Class "A" / CE / KC	FCC Class "A" / CE / KC	FCC Class "A" / CE / KC	FCC Class "A" / CE / KC
	ErP / Energy Star	Yes / Yes (Energy Star 7.0)	Yes / Yes (Energy Star 7.0)	Yes / Yes (Energy Star 7.0)	Yes / Yes (Energy Star 7.0)
Media player Compatibility	OPS Type Compatible	Yes	Yes	Yes	Yes
	External Media Player Attachable	Yes	Yes	Yes	Yes
Software Compatibility	Content Management Software	SuperSign CMS	SuperSign CMS	SuperSign CMS	SuperSign CMS
	Control and Monitoring Software	SuperSign Control/Control+	SuperSign Control/Control+	SuperSign Control/Control+	SuperSign Control/Control+
	Signage365Care	Yes	Yes	Yes	Yes
Accessories	Basic	Remote Controller, Power Cord, QSG, HDMI Cable, Regulation Book, Phone to RS232C Gender			
	Optional	Stand(ST-653T), Media Player, Wall Bracket(65", 55", 49" : LSW350B / 43" : LSW240B), VESA Adapter(65", 55", 49" : AM-B330S / 43" : AM-B220S), OPS Kit(KIT-OPSH)			

1) Network based control 2) Compatibility may differ by equipment 3) In conditions within 30°C temperature, 50% humidity



Download
LG C-Display+
Mobile App
Google Play Store



www.lg.com/b2b
www.youtube.com/LGCommercialDisplay
www.facebook.com/LGInformationDisplay
www.linkedin.com/company/LGInformationDisplay

LG may make changes to specifications and product descriptions without notice.
Copyright © 2019 LG Electronics Inc. All rights reserved. "LG Life's Good" is a registered trademark of LG Corp.
The names of products and brands mentioned here may be the trademarks of their respective owners.

