



PowerLite® Pilot™ (ELPCB01)

CONNECTION AND CONTROL BOX



Connectivity, Convenience and Control.

Simplify cable management and control of your Epson short-throw or ultra-short-throw classroom projector with the PowerLite Pilot, a convenient connection and control box from the world leader in multimedia projectors. PowerLite Pilot easily installs on any wall and makes it easier than ever to connect to and operate your audio and video sources, computer, iPod® and more. The optional speakers and wireless microphone offer expanded audio performance, helping you to enhance any learning environment. PowerLite Pilot is the perfect solution to manage your classroom multimedia devices.

Wall-mounted projector control box — manage your Epson short-throw or ultra-short-throw projector (power, AV mute, volume, sources) via RS-232; no remote control needed

Comprehensive input/output connections — HDMI, AUX Audio, USB Type A, USB Type B, Audio inputs, 2 VGA inputs, Audio outputs, Rec out, S-video, Composite, RS-232

Use as an extension box — expand the range of your cables for added flexibility



PowerLite® Pilot™ (ELPCB01)

CONNECTION AND CONTROL BOX

The perfect partner to the best-selling projectors in the world.

Epson offers a wide range of high-quality projectors to facilitate almost any teaching scenario. Built with image quality and reliability in mind, Epson projectors enhance communication and inspire collaboration, while offering a low total cost of ownership. From long-throw projectors designed for traditional educational settings to ultra-short-throw and all-in-one solutions built for progressive classrooms, Epson has the model made for you.



Comprehensive input/output connections

HDMI, AUX Audio, USB Type A, USB Type B, Audio inputs, 2 VGA inputs, Audio outputs, Rec out, S-video, Composite, RS-232.



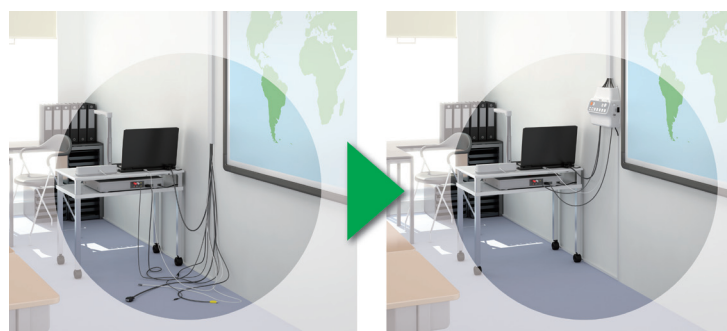
Easy operation

Large individual source buttons match the Epson projector inputs.



Simplified cable management

Convenient wall placement helps avoid potential hazards.

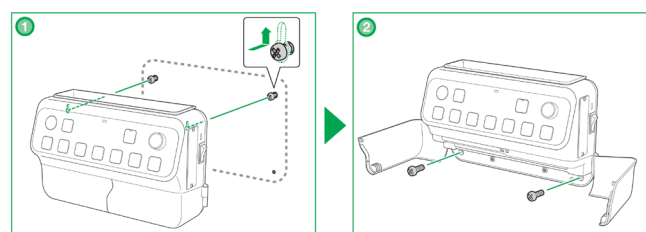


Without PowerLite Pilot

With PowerLite Pilot

Easy installation

Easily attach to the wall using four screws (screws not included).



Better Products for a Better Future™

For more information on Epson's environmental programs, go to eco.epson.com

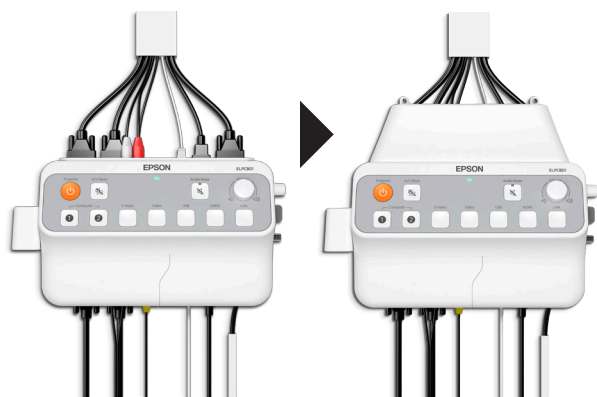
Eco Features

- Designed to be recycled¹
- Epson America, Inc. is a SmartWaySM Transport Partner²



Sleek, clean design

Protective cable cover included.



Without cable cover

With cable cover

Play music from your device

Connects to an iPod, iPhone® and other portable audio devices.



Convenient storage

Included iPod/pen holder.



PowerLite Pilot (ELPCB01)

Optional Accessories:

Audio solution available

- Optional speakers and wireless pendant microphone, helps amplify sound and ensure the entire class can hear the lessons

ELPSP02 Active Speakers

- Engage your classroom with 30 W of powerful sound with this speaker set. Use the speakers (with built-in amplifier) to enable all students in the room to clearly hear your lesson, enhancing the learning experience. The speakers can be easily mounted on the wall and can be used with any Epson projector with or without the PowerLite Pilot.
- The speakers also have a helpful auto standby feature which activates when there is no signal sent, to help save energy and associated costs. The speakers power back on automatically when an audio signal is detected.



ELPMC02 Wireless Pendant Microphone

- The IR microphone helps amplify the teacher or presenter's voice to help prevent vocal strain and ensure their presentation will be heard by the entire class.



Pendant Microphone



IR Dome Sensor with Microphone (included)

- Innovative PowerLite Pilot design also houses the IR receiver unit for a completely integrated solution



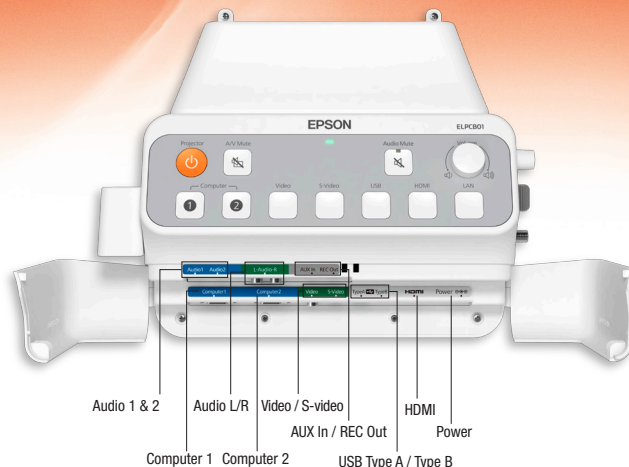
IR Receiver Unit with Microphone (included)

PowerLite® Pilot™

Connection and Control Box

Product Name	Product Code	UPC
PowerLite Pilot ELPCB01	V12H443020	0 10343 88426 7

Optional Accessories	Product Code	UPC
ELPSP02 Active Speakers	V12H467020	0 10343 88427 4
ELPMC02 Wireless Pendant Microphone	V12H4430M2	0 10343 88428 1
On Wall Cable Management Kit	ELPCK01	0 10343 87789 4



PowerLite Pilot Specifications

I/O Port

Input Video: VGA x 2, Composite Video, S-video, HDMI, USB-A, USB-B

Input Audio: Stereo mini jack (3.5 mm) x 4, RCA connector (L and R) x 1

Output Video: VGA x 2, Composite Video, S-Video, HDMI, USB-A, USB-B

Output Audio: Stereo mini jack (3.5 mm), RCA connector (L and R) x 1

Control

RS-232C (9-pin)

Functions

Projector Control

Power on/off, Source Selection (computer 1 / computer 2/video/s-video/USB(A/B)/HDMI/LAN), A/V Mute

Audio Control

Audio Mute, Volume adjustments

Operating Temperature

41 °F to 95 °F

Operating Humidity

20% – 80% RH

Power Supply Voltage

100 – 240 V AC/DC

Power Frequency

50/60 Hz

Power Consumption

Less than 8 W

Power Consumption (Standby mode)

Less than 0.5 W

AC Power Adapter Output Voltage

DC 12 V

Speaker Specifications

Active Speaker (L) including amplifier

Output power: 15 W rms

Frequency response: 80 Hz – 20 kHz

Driver: Tweeter/Woofers

Bass reflex port: 1

SPL: 100 dB at 1 W at 1 m

Impedance: 8 ohm

Control: Volume knob, Treble adjustment control, Bass adjustment control, AC Select switch

Input: DC in, Mini jack 3.5 mm, RCA pin jack (L and R)

Output: RCA pin jack (to passive speaker), Mini Jack 3.5mm

Passive Speaker (R)

Output power: 15 W rms

Frequency response: 80 Hz – 20 kHz

Driver: Woofer/Tweeter/Woofers

Bass reflex port: 1

SPL: 100 dB at 1 W at 1 m

Input: PCA pin jack (R) from active speaker

Operating Temperature

41 °F to 95 °F

Operating Humidity

20% – 80% RH

Power Supply Voltage

100 – 240 V AC/DC

Power Frequency

50/60 Hz

Power Consumption

45 W

Power Consumption (Standby mode)

Less than 0.7 W

Microphone Specifications

IR Microphone

Battery type: AA Alkaline battery x 2

Audio input: Mini jack (3.5 mm)

IR Dome Sensor

Input voltage: DC 24 V (draws power from IR receiver)

Terminal: 75 Ω F connector

IR Receiver Unit

Input voltage: DC 24 V

Receiver frequency: 2.06 MHz

Terminal: 75 Ω F connector x 2

IR Luminescence

Wavelength: 870 nm

Transmitting frequency: 2.06 MHz

Operating Temperature

41 °F to 95 °F

Operating Humidity

20% – 80% RH

Dimensions (W x D x H)

PowerLite Pilot

11.2" x 3.9" x 6.8"

Weight: 3.7 lb

ELPSP02 Active Speaker (Position: L)

6.1" x 9.1" x 5.6"

Weight: 4.6 lb

ELPSP02 Passive Speaker (Position: R)

6.1" x 9.1" x 5.6"

Weight: 4.2 lb

IR Microphone

5.1" x 2.3" x .7"

Weight: 0.2 lb

IR Dome Sensor

3.9" x 1.9"

Weight: 0.4 lb

IR Receiver Unit

4.9" x 3.5" x 1.1"

Weight: 0.4 lb

Packaging Specifications

PowerLite Pilot

Dimensions 12.2" x 12.2" x 7.5" (W x D x H)

Weight: 7.3 lb

ELPSP02 Active Speakers

Dimensions 7.9" x 14" x 11.8"

Weight: 12.1 lb

ELPMC02 Wireless Pendant Microphone

Dimensions 9.4" x 8.5" x 4.8"

Weight: 2.4 lb

What's in The Box

PowerLite Pilot

External AC power adapter with power cord

Cable cover

Pen holder

User's guide

Template sheet

Installation manual

Warranty statement

PrivateLine® support card

ELPSP02 Active Speakers

Active speaker (including amplifier)

Passive speaker

External AC power adapter with power cord

Wall mount plate

Speaker cable

User's guide

Warranty statement

ELPMC02 Wireless Pendant Microphone

IR Microphone

IR Dome Sensor

IR Receiver Unit

Neck Strap

User's Guide

AA Alkaline batteries

Coaxial Cable

Support

The Epson Connection™

Pre-sales support

U.S. and Canada 800-463-7766

Internet website www.epson.com

PowerLite Pilot

Two-year limited warranty

ELPSP02 Active Speakers

One-year limited warranty

ELPMC02 Wireless Pendant Microphone

One-year limited warranty

*See our website for convenient and reasonable recycling options at www.epson.com/recycle

*SmartWay is an innovative partnership of the U.S. Environmental Protection Agency that reduces greenhouse gases and other air pollutants and improves fuel efficiency.