

Epson EB-G5450WU

DATASHEET



This best-in-class projector is designed and built to meet the exacting requirements of large venue installation.

Designed for large education and corporate venues, and specialist vertical markets, the projector has an equally high White and Colour Light Output (CLO) thanks to Epson's 3LCD technology. This means presentations have vivid yet natural colours even in full daylight.

EasyMP Network & Control: Monitor the status of your projector, email the administrator and set up alerts, so the projector emails the administrator in case of any issues. You can also broadcast a message to the network with the included EasyMP Network Projection software.

The projector's WUXGA format allows presenters to show a 16:10 widescreen image with image quality that exceeds Full HD resolution. Its 1080/24fps processing is ideal for projecting smoother, more fluid images when playing a film, creating up to 60 frames per second in 3-2 pulldown mode and 48 frames per second in more filmic 2-2 pulldown mode.

Product durability is assured and TCO kept to a minimum with the addition of the long-life C²Fine Inorganic LCD panel. And for low maintenance, the electrostatic filter can be cleaned or changed quickly.

Five optional lenses are available, allowing you to create the perfect projector to suit particular venues and different types of multimedia content.

KEY FEATURES

- WUXGA resolution
- 3LCD for outstanding picture quality
- 4,000 lumens for bright daylight viewing
- Lens shift
- Straightforward installation and operation
- Wide range of connectivity options
- Low maintenance



PRODUCT SPECIFICATIONS

PROJECTION TECHNOLOGY	3LCD Technology 0.76 inch with MLA (C²Fine)
RESOLUTION	WUXGA – 1920 x 1200 (16:10 aspect ratio)
WHITE LIGHT OUTPUT* Normal / Eco	4000 / 3200 Lumens
COLOUR LIGHT OUTPUT* Normal / Eco	4000 / 3200 Lumens
CONTRAST	1000:1
LAMP Life (Normal / Eco) Type	2000 / 3000 hours 275W UHE
LENS	Standard Lens Optional lenses available, see Optional Lens Specifications chart for full details
CONNECTIVITY Video input Audio input Digital input Computer input Control input Computer output Audio output Wireless connection	1 x RCA, 1 x S-Video, 1 x Component (D-sub 15-pin), 1 x HDMI, 1 x DVI-D, 1 x 5-BNC, 1 x 1-BNC 3 x Stereo mini-jack, 1 x RCA (R/L), 1 x HDMI 1 x HDMI, 1 x DVI-D 1 x D-sub 15-pin (RGB), 1 x 5-BNC, 1 x DVI-D 1 x RJ-45, 1 RS-232C 1 x D-sub 15-pin (RGB) 1 x Stereo mini-jack 1 x optional Wireless LAN Unit (802.11 a/b/g), 1 x optional Quick Wireless Connection USB Key
ADVANCED FEATURES Security Operation EasyMP features Display	Security cable hole, Lens lock, Kensington lock, Password protection, Wireless LAN Unit lock Lens shift, Split-screen function, 2-2 Pulldown, Direct Power on/off, Instant off EasyMP PC-Free, EasyMP Network Projection, EasyMP Network & Control 8 colour modes (including DiCOM Simulation)
LANGUAGES	English / French / German / Italian / Spanish / Portuguese / Korean / Chinese / Russian / Dutch / Danish / Hungarian / Czech / Polish / Norwegian / Finnish / Swedish / Greek / Turkish / Arabic / Japanese / Traditional Chinese / Romanian / Slovenian / Ukrainian / Catalan / Thai
NOISE LEVEL Normal / Eco	35dB / 30dB
SOUND	1 x 7 Watt
WEIGHT	6.8kg
DIMENSIONS (W x D x H)	470 x 311.5 x 135mm
POWER CONSUMPTION Normal / Eco Standby	393W / 330W 0.47W
WARRANTY	3 years on main unit; 1 year on lamp

* ISO 21118 based measurement

PRODUCT LOGISTICS

PROJECTOR MODEL	EB-G5450WU
SKU CODE	
BARCODE	
WHAT'S IN THE BOX	Projector Standard lens Power cable Computer cable Remote control and batteries Lens cover Bundled software User's manual set
GROSS WEIGHT	10.12kg
CARTON DIMENSIONS (L x W x H)	556 x 468 x 282mm

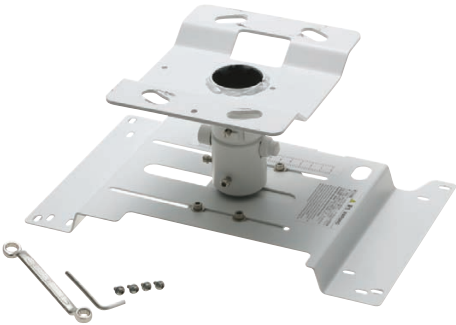
OPTIONAL LENSES

- Standard Lens
V12H004S05 (ELPLS05)
- Rear Projection Wide Lens
V12H004R03 (ELPLR03)
- Middle Throw Zoom Lens 1
V12H004M04 (ELPLM04)
- Middle Throw Zoom Lens 2
V12H004M05 (ELPLM05)
- Long Throw Zoom Lens
V12H004L06 (ELPLL06)

See Optional Lens Specifications chart for full details

OPTIONAL ACCESSORIES

- Spare lamp
V13H010L62 (ELPLP62)
- Air filter
V13H134A17 (ELPAF17)
- Wireless LAN unit
- Quick Wireless Connection USB Key
V12H005M08 (ELPAP08)
- 80-inch pull-up screen 16:10
V12H002S24 (ELPSC24)
- Epson Desktop Visualiser
- Epson USB Visualiser
V12H321003 (ELPDC06)
- Ceiling mount
V12H003B22 (ELPMB22)
- Ceiling pipe 668–918mm
V12H003P13 (ELPFP13)
- Ceiling pipe 918–1168mm
V12H003P14 (ELPFP14)



Tailor-made ceiling mount for easy installation and security



For more information please contact

Telephone: 0871 222 6702 (UK)*
01 436 7742 (Republic of Ireland)
E-mail: enquiries@epson.co.uk
Chat: etalk.epson-europe.com
Fax: 0871 222 6740

Web: www.epson.co.uk
www.epson.ie

* Calls cost 10 pence per minute from a standard BT landline. Calls from other networks and mobiles may vary.
Trademarks and registered trademarks are the property of Seiko Epson Corporation or their respective owners.
Product information is subject to change without prior notice.

