

Epson ultra-short-throw projector series

# BRINGING LEARNING TO LIFE



**EPSON®**  
EXCEED YOUR VISION

# INSPIRING TEACHERS TO CAPTURE IMAGINATIONS

Contents and Introduction	02-03
Ultra-short-throw features	04-05
Interactivity	06-07
New and improved features	08-09
Great value and performance /	10
Quick and easy set-up /	
3LCD technology	
Product overview	11
Smart solutions for education	12

As the world number one projector manufacturer\*<sup>1</sup>, we never stop listening and working hard to give you the tools you need to make learning and teaching more interesting, more exciting and more rewarding.

Our latest ultra-short-throw projectors make any classroom a more engaging place to learn. They project superb, clear images in any light conditions, are very easy to set up and use, and have the affordability to match tight educational budgets.

Choose from six models, including two interactive projectors that make every lesson a truly immersive experience.



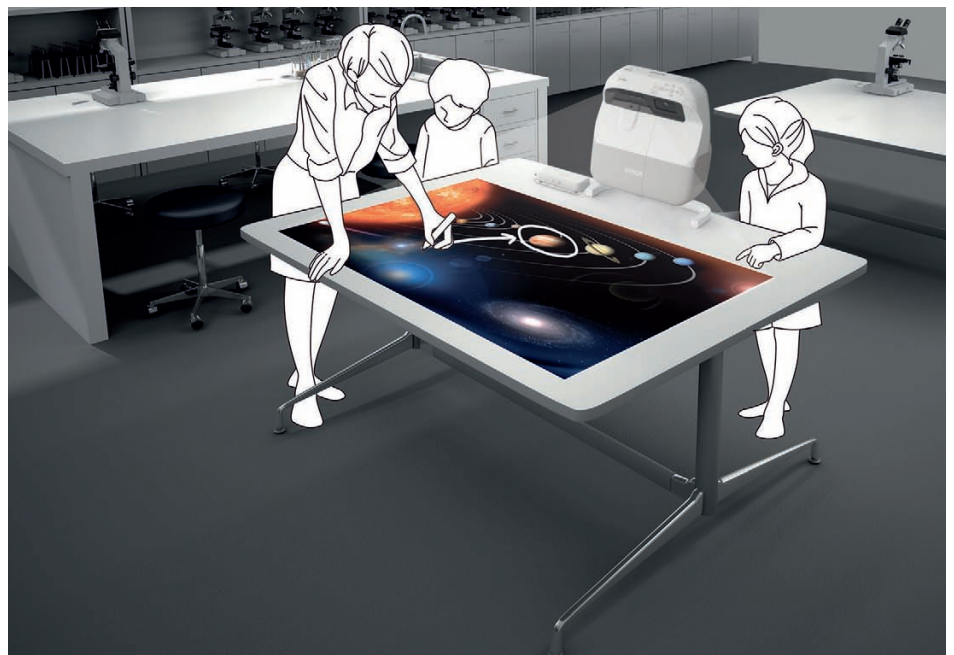


The new Epson ultra-short-throw projector series opens up a world of teaching opportunities. They use our acclaimed **3LCD** technology to deliver bright, clear and colourful still and moving images with amazing detail and clarity. This exceptional level of visual accuracy makes information really come alive.

Epson's ultra-short-throw **interactive** projectors take involvement even further. Mount them on the wall, ceiling, desktop or side of the desk and turn any flat surface into an interactive screen that becomes an integral part of the lesson.

You can also choose from accessories like our ELPDC06 USB Visualiser, which projects **3D** items on screen in real time. Or the Epson ELPCB01 Control and Connection Box which gives you convenient, fingertip control of the projector at the front of the classroom.

These projectors can change and improve the way you teach, and we will continue to work on the innovations you need to make every lesson an **enhanced learning experience**.





# SMALL ROOM, BIG IMPACT

Epson ultra-short-throw projectors are designed to be mounted just inches from the screen. This makes installation simple and tidy in any sized room, removes distractions like shadows and glare and leaves you free to concentrate on teaching.

## Easy installation and integration

The setting plate ensures user-friendly installation and the cable cover keeps cables tidy, safe and out of sight. On top of this these projectors also provide a great match for your existing interactive white board

## Powerful sound

Built-in 16W speaker and microphone provides clear, high-quality output



## No waiting

Direct power on / off, quick-start, instant-off

## Easy set-up and control

Teachers are free to concentrate on lessons

## Immersive teaching

Superb interactivity gets students really involved

## Low maintenance

New lamp lasts up to 4,000 hours, filter maintenance cycle lasts up to 5,000 hours

## Ultra-short-throw projection

Reduces shadow and light never shines in presenter's eyes

---

## Clear vision



As the image is projected very close to the screen, you'll never be looking into the light as you do with projectors positioned a distance away. You're free to look at the screen and interact freely with the class.

- No dazzling from the light beam
- Get a clear view of what your class is doing
- Interact easily with students and easily identify anyone who comments or asks questions

---

## Reduced shadow



With ultra-short-throw projectors the image is projected from so close that you are very unlikely to find yourself in front of the beam. As a result you can get a lot closer to the image without casting a shadow.

- Point out elements of the image without obscuring important information
- Students can still clearly see you, which makes interaction and explanation much clearer

---

## Brighter projection image

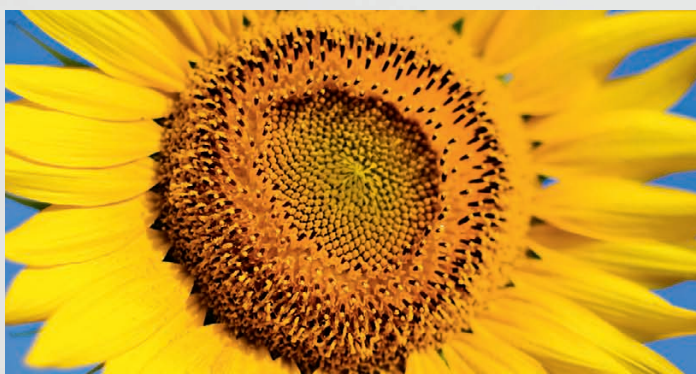


Up to 3,100 lumens White and Colour Light Output (CLO) creates images that really stand out and show every aspect of your subject at a level of clarity that will improve students' understanding.

- Clear, bright images even in daylight or with the lights on
- CLO is the simple accurate measure of picture quality
- Range includes 2,600 lumens CLO (EB-470 / 475W / 475Wi), 3,000 lumens CLO (EB-480) and 3,100 lumens CLO (EB-485W / EB-485Wi)

---

## Superb picture quality



Epson 3LCD technology produces high-quality images with vivid, natural colours and deep blacks. HDMI inputs also mean that high-definition content can be shown with maximum clarity.

- WXGA widescreen resolution 1280 x 800 (XGA EB-470 / 480)
- Project a large image up to 100in / 254cm diagonally
- Fantastic quality of still and moving images
- HDMI input for high-definition digital audio and video sources



# TURN ANY FLAT SURFACE INTO AN INTERACTIVE ONE

## Epson EB-475Wi / EB-485Wi

Make your teaching inspirational and engaging – make any flat surface interactive with these amazing projectors. Get your students truly involved with pens that instantly annotate still or moving images without calibration or connection to a PC.

### Dual-user interactivity



**Involve two users with two interactive pens that can annotate and 'draw' on the image at the same time.**

- Two highly responsive pens for simultaneous interactivity
- Involve two users or two teams of students at once
- Easy to hold and use

### New, improved interactive pens



**Our new battery-powered pens are smaller, lighter and easier to handle for smaller hands. They make your presentations smoother because they even detect the pen's movements when not in contact with the projection surface.**

- The pens only use one battery
- Pen movement is accurately detected even when 'hovering' over screen

### Automatic set-up and calibration



**These projectors are quick and simple to use as you don't need to install a driver\*2 and they come with default automatic calibration, allowing you to quickly get set up for your lesson.**

- Easy to set up, with no driver installation needed\*2





## A range of surfaces



**Project images onto the wall or desktop to keep classes interesting, and annotate presentations on any flat surface.**

- Projectors can be mounted on a wall, ceiling, desktop or side of the desk
- Several projection modes to suit the way you teach
- Project onto a whiteboard, blackboard or wall



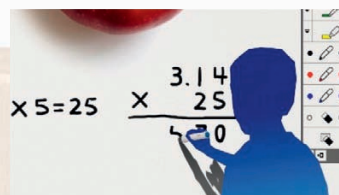
## Instant annotation tool



**Take easy control of a range of interactive functions with a click of the remote.**

- Select line colour, thickness and shape
- Preset pens and erasers
- Page navigation, mouse and magnify
- Control your visualiser

## High response speed



**The new pens are very responsive, so any movement you make is instantly translated onto the screen. There's no waiting around, which means your presentations will keep up with even the fastest minds.**

- No delay between pen movement and interactive annotation on screen
- Keeps lessons flowing smoothly, without interruptions

# NEW AND IMPROVED FEATURES

Every new feature in our ultra-short-throw series is designed to give you more of the tools you need. We've made it easier for you to teach, and more fun for your students to learn with higher quality image projections and more flexible features. All of this with an even lower total cost of ownership than our previous models.

## Interface now with HDMI input

Compatibility with everything from HDMI to LAN cables, microphones and PCs make these projectors well adapted to any setting. Easy integration and advanced connectivity makes hardware and technology upgrades a breeze.

## Enhancing all areas

- Brightness now up to 3,100 lumens CLO, contrast ratio now 3,000:1
- New horizontal keystone correction
- Now includes Epson 3-in-1 USB display
- Easier, more flexible set-up and installation
- Lower lamp wattage now 190W
- Improved interactivity
- More powerful speaker now 16W



### Lamp life

Longer lamp life up to 4,000 hours, longer filter maintenance cycle lasts up to 5,000 hours



### Connectivity

Optional wireless connectivity

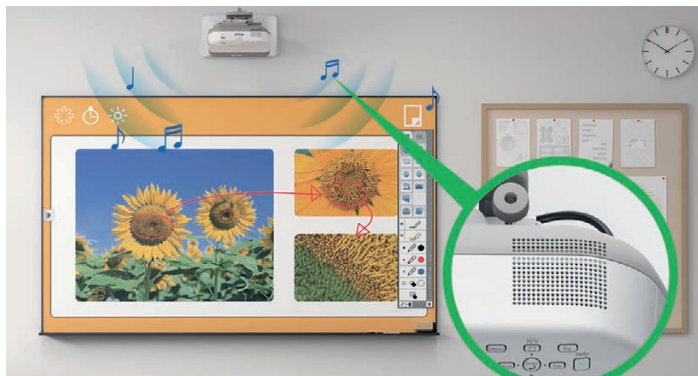
### More compact

Projector is lighter (5.4kg) and 30% smaller (106mm shorter) for easier positioning, plus requires 43% smaller packaging than the previous range





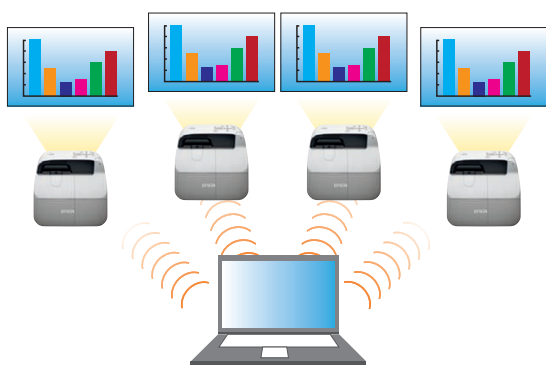
## Great sound to match your vision



Add impact and clarity and get your message across in any sized classroom with powerful built-in audio support.

- Powerful 16W speaker fills any room
- Microphone input terminal ensures everyone hears your voice
- Microphone also adds flexibility for interviews and questions

## Easier connection



It's easy to manage a fleet of projectors from a single computer with the latest Epson EasyMP Monitor & Control software. Also, for cable-free presenting from your PC, simply plug in an optional Wireless LAN Adapter.

- Monitor all projectors, set up email alerts and define settings such as on / off times with Epson EasyMP
- Lose the cables and enjoy even greater flexibility with fast, easy 802.11 b/g/n Wi-Fi
- Display content on up to 4 projectors at the same time

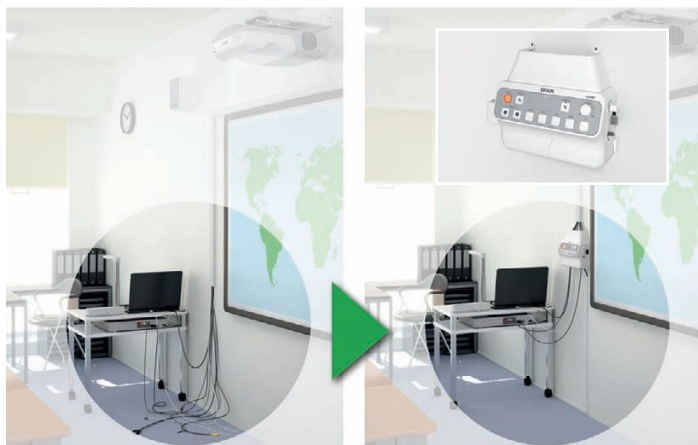
## Real items in real time



Connect the optional Epson ELPDC06 USB Visualiser and display real items, documents and other materials on the screen, directly and in real time.

- Easy demonstrations and sharing of 3D objects
- Can be powered by direct USB connection
- Ideal for enhancing and adding materials during lessons

## Simple control



Simply plug your projector and signal sources such as laptops and DVD players into the optional ELPCB01 Control and Connection Box and save valuable teaching time by having the projector controls at your fingertips.

- No more fiddling with ceiling mounted controls
- Switch between sources at the touch of a button
- Keep cables neat and tidy
- Built-in USB signal booster extends reach up to 10m

# GREAT VALUE AND PERFORMANCE

The new Epson ultra-short-throw series is designed to take education forward while working within tight budgets. These projectors combine cutting edge technology with a very low cost of ownership.

## New lamp technology

Enjoy higher brightness and extended lamp life while using less energy. The new lamp minimises wasted light by focusing it more precisely for better results and lower electricity bills.

## Low maintenance cycle

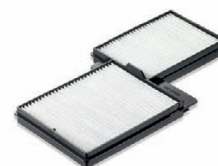
Reliable, longer-lasting consumables keep costs down and free up more of your time to concentrate on lessons. The extended maintenance cycle is now up to 5,000 hours for the filter and the lamp life is up to 4,000 hours.

## High efficiency filter

The new electrostatic filter is much more efficient at preventing dust from entering the projector, which ensures maximum image brightness for longer than ever.

## Better for you, better for the environment

By combining energy efficiency, a longer-lasting lamp and filter, smaller size and reduced packaging, our new projectors improve performance but reduce environmental impact.

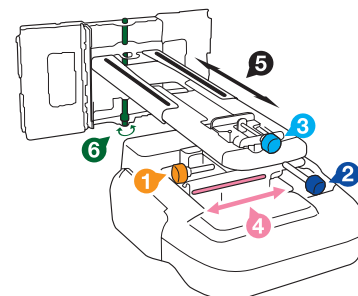


Electrostatic filter

## Quick and easy set-up

The new mount has 6-axis adjustment to produce a perfect image quickly and easily. You can also adjust the projector height without changing the image size.

- Vertical and horizontal keystone correction of  $\pm 5^\circ$
- Clear stickers indicate each dial's function
- On-screen setting guide leads you through installation
- Template sheet assists base plate positioning
- Quick Corner function enables fine adjustment
- Shorter throw-ratio and projection offset makes installation in small rooms even easier



1. Horizontal Roll 2. Horizontal Rotation 3. Vertical Tilt  
4. Horizontal Shift 5. Forward / Backward 6. Vertical Slide



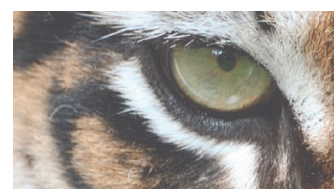
## It's all in the detail – Epson 3LCD

**Clarity is essential for good teaching and Epson 3LCD technology gives you the clearest, richest, most detailed images around.**

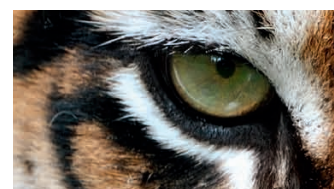
Epson's 3LCD technology provides an equally high White and Colour Light Output for bright pictures with rich colours, deep blacks and amazing detail even in daylight or with the lights on.

The simplicity of this technology makes it very reliable, which is important for busy classrooms where downtime or delays are very disruptive. It's energy efficient too, which helps to keep electricity bills down.

You can evaluate a projector's ability to deliver great colour images by looking at its Colour Light Output (CLO). This simple, accurate measurement of total colour performance is much more useful than simple brightness.



Single panel system\*3









3LCD system\*3



# PRODUCT OVERVIEW

## Specifications

	Interactive		Non-interactive			
	Epson EB-485Wi	Epson EB-475Wi	Epson EB-485W	Epson EB-475W	Epson EB-480	Epson EB-470
						
<b>Main features</b> Fewer shadows when in use thanks to ultra-short-throw technology	•	•	•	•	•	•
Quick-start and instant-off	•	•	•	•	•	•
Large projected image size (Up to 100in)	•	•	•	•	•	•
Interactive presenting surface	•	•	–	–	–	–
Dual digital pens	•	•	–	–	–	–
Built-in interactive functionality for annotating presentations without PC connection	•	•	–	–	–	–
Auto-calibration	•	•	–	–	–	–
White and Colour Light Output (CLO)	3100	2600	3100	2600	3000	2600
Resolution	WXGA	WXGA	WXGA	WXGA	XGA	XGA
<b>Options</b> Wireless connectivity	Optional	Optional	Optional	Optional	Optional	Optional
USB Visualiser	Optional	Optional	Optional	Optional	Optional	Optional
Control and Connection Box	Optional	Optional	Optional	Optional	Optional	Optional
Table mount	Optional	Optional	Optional	Optional	Optional	Optional
<b>Installation</b> Tailor made wall-mount solution	•	•	•	•	•	•
Easy picture alignment with horizontal and vertical keystone correction	•	•	•	•	•	•
Image and sound broadcast over network	•	•	•	•	•	•
Four mounting positions (wall, ceiling, desktop and side of the desk)	•	•	•	•	•	•

# SMART SOLUTIONS FOR EDUCATION

Our ultra-short-throw projectors are part of a wide range of Epson products that add quality, ease-of-use and value to all areas of education. From the classroom to the office, from admissions to archiving, we provide complete solutions that change the way education works.

## Epson WorkForce Pro WP-4525DNF

Give your school or college fast, laser-like printing at a cost-per-page up to 50% lower than a laser<sup>\*4</sup>.



This top-of-the-range all-in-one offers automatic double-sided printing, faxing, copying and scanning, making it perfect for teachers and administrators.

- Fast, efficient printing up to 26 pages per minute (in monochrome)
- Reliable – monthly duty cycle of up to 20,000 pages
- 80% lower energy consumption than a laser<sup>\*5</sup>
- High paper capacity up to 580 sheets



## Epson GT-S85

This high-speed duplex scanner combined with Document Capture Pro<sup>\*6</sup> boosts productivity and frees up time for teachers and administrators.



At up to 40ppm, it automates paper-based processes at the touch of a button and makes sharing easy by direct scanning to Cloud and email.

- Intelligent batch scanning streamlines admissions
- Share lessons and ideas via the Cloud
- Send scanned documents via email
- Simple multi-page scanning with the 75-page Automatic Document Feeder

## Epson LabelWorks LW-400

The lightweight and portable LabelWorks LW-400 fits easily into your hand and takes care of all your desktop and mobile labelling requirements.



It is straightforward to use allowing you to create personalised, durable labels which makes it ideal for educational environments.

- Quickly and easily identify teaching equipment
- Manage library assets
- Keep cloakrooms clutter free
- 6, 9, 12 and 18mm label widths
- Create special label formats, such as Tab, Cable and even Barcodes

## Epson Discproducer™ PP-50

Burn and print high-quality CDs and DVDs easily and economically with the compact, fully-automated Epson Discproducer™ PP-50.



Ideal for copying, storing and sharing information for use in the class or at home, it can publish up to 50 discs in a single batch. With the included intuitive driver software it's as easy to use as an office printer.

- Accurate burning, photorealistic printing direct to inkjet printable CD's
- Low cost per unit suits education budgets
- Print more than 1,000 discs per set of cartridges
- Rugged, reliable and dust-proof

<sup>\*1</sup>Futuresource Consulting Ltd. <sup>\*2</sup>Available to Windows® and Linux® only, driver installation is necessary for Mac®. <sup>\*3</sup>Illustrative purposes only. <sup>\*4</sup>50% lower CPP. Comparison made against the top 10 A4 colour laser printers and MFPs sold in France, Germany, Italy, Spain, and the UK in Q4 2010 as tracked by IDC. Cost per page is calculated from manufacturers' official list prices for toner cartridges and published yields in France, Germany, Italy, Spain, and the UK as of December 2010. <sup>\*5</sup>80% lower energy consumption. Comparison made against the top 10 A4 Colour Laser Printers & MFPs sold in France, Germany, Italy, Spain, & UK in Q1 2011 tracked by IDC; power consumption calculated using manufacturers' published data for Print/Average Mode as of July 2011. <sup>\*6</sup>Available as a free download on Epson's website.



Better Products for a Better Future™

For more information please contact:

Telephone: 0871 222 6702 (UK)\*  
01 436 7742 (Republic of Ireland)  
E-mail: enquiries@epson.co.uk  
Chat: etalk.epson-europe.com  
Fax: 0871 222 6740

Web: [www.epson.co.uk](http://www.epson.co.uk)  
[www.epson.ie](http://www.epson.ie)

\* Calls cost 10p per minute plus network extras.

Trademarks and registered trademarks are the property of Seiko Epson Corporation or their respective owners. Product information is subject to change without prior notice.

**EPSON®**