

The Access/Series E is a motorized ceiling-recessed projection screen. Sleek white extruded aluminum case installs above ceiling. Trim flange finishes the ceiling opening. Viewing surface and roller can be installed at the same time or can be added quickly and easily, without tools, at a later date. The extruded aluminum case is UL approved for use in an environmental air space. Features ceiling trim flanges, prewired junction box, and movable brackets for smooth operation.

Screen Type

Motorized, ceiling recessed projection screen

Viewing Surfaces

- **OptiView Family** (self-supporting front screen surfaces): Matt White XT1000E, Contrast Grey XH800E, Contrast White XH100E, Argent White XH1500E Pearl White CH1900E, Glass Beaded CH3200E, EcoMatt XT700E
- **ClearSound Family** (acoustically transparent screen surfaces): ClearSound White Weave XT900E, ClearSound Grey Weave XH600E
- Chroma Key Blue, Chroma Key Green

Features

- NTSC, HDTV and 16:10 formats have image area framed with black on all four sides. Black side borders are available on request for AV format screens
- Case dimensions are 7" H x 9" D (17.8 cm H x 22.9 cm D) including flange and mounting brackets
- Motor-in-roller assures quiet and smooth operation
- Surface and roller can easily be removed and replaced to update system
- Warranted for one year against defects in materials and workmanship
- US Patent Nos. 6,137,629; 6,421,175; 6,532,109; 6,816,308; 7,559,707

Options

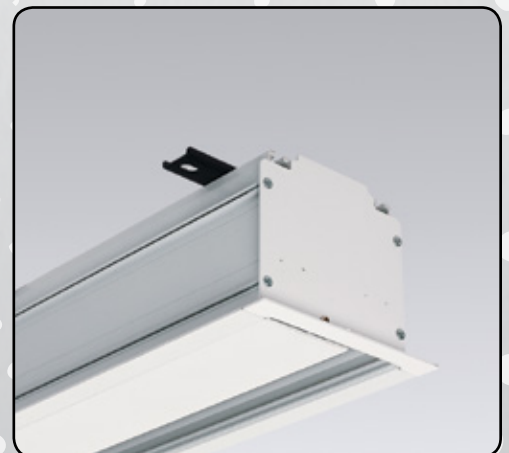
- **Controls**—Can be furnished with standard [control options](#)
- **Motors**—Available with optional [Quiet Motor](#), [Motor with Built-in Low Voltage Controller](#), [Quiet Motor with Built-in Low Voltage Controller](#), 220v motor
- **Viewing Surfaces**—Numerous self-supporting [viewing surfaces](#) available
- Extra drop above image area available, please specify color

Sizes

- **16:10 Format**—from 94" (239 cm) to 189" (480 cm) diagonal
- **16:9 HDTV Format**—from 92" (234 cm) to 184" (467 cm) diagonal
- **4:3 NTSC/PAL Format**—from 72" (183 cm) to 200" (508 cm) diagonal
- **AV Format**—from 50" x 50" (127 cm x 127 cm) to 144" x 144" (366 cm x 366 cm) viewing area
- Custom sizes available

Supporting Documents

All instructions, technical drawings and other supporting documents are located at <http://www.draperinc.com/ProjectionScreens/DocumentListing.asp> in our document library.



For more information on this product visit:
www.draperinc.com/go/AccessE.htm

