

you can
Canon

MULTIMEDIA PROJECTOR RANGE

XEED

BRIGHTER THINKING



XEED SX7

XEED SX6

XEED SX60

XEED X700

- CONFERENCE VENUES
- EXHIBITION CENTRES
- BOARDROOMS
AND MEETING
FACILITIES
- PHOTOGRAPHY
PROFESSIONALS
- GRAPHIC DESIGN
INDUSTRY
- MEDICAL IMAGING
- SIMULATION
- PUBLIC DISPLAYS
- ENTERTAINMENT,
NIGHTLIFE AND
EVENTS INDUSTRY
- THEATRE AND
SPECIAL EFFECTS

Think XEED

Designed with professionals in mind, XEED stands for high-impact imaging. Each XEED offers pin-sharp projection, thanks to the revolutionary application of advanced Canon optics and LCOS technology. For ultra-portable projection with professional image quality – think XEED.

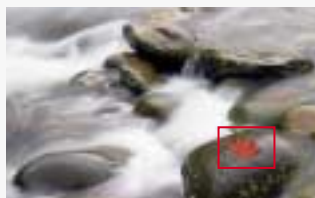


PROFESSIONAL RESOLUTION AND COLOUR

Since professional presentation requires a professional level of detail, the XEED SX7, XEED SX6 and XEED SX60 all boast SXGA+ resolution. Each projector is capable of displaying highly detailed images – ideal for CAD drawings and medical images. For designers, printers and other graphics professionals, the XEED SX7 and XEED SX6 both support the Adobe RGB colour space.

SEAMLESS LCOS IMAGES

Free from the unsightly 'lattice' and 'rainbow' effects all too familiar to users of LCD and single-chip DLP projectors, the XEED range uses LCOS panels to harness the best of both technologies, while cleverly avoiding the drawbacks of each. Images are smooth and flawless, with high contrast and faithful colour reproduction.



Original Image



LCD technology



XEED LCOS technology



Revolutionary optical technology

Canon brings 70 years of optical innovation to the creation of XEED. Original Canon lenses and advanced optics make XEED the highest performance ultra-portable projectors available today.



BRILLIANT AISYS IMAGING

Canon AISYS (Aspectual Illumination System) produces high resolution, seamless LCOS images from an ultra-portable projector. AISYS optimises the light path within the projector body, enabling all four XEED models to deliver astounding levels of brightness – 4000 lumens from the XEED SX7 and XEED X700, 3500 lumens from the XEED SX6 and 2500 lumens from the XEED SX60.

GENUINE CANON OPTICS

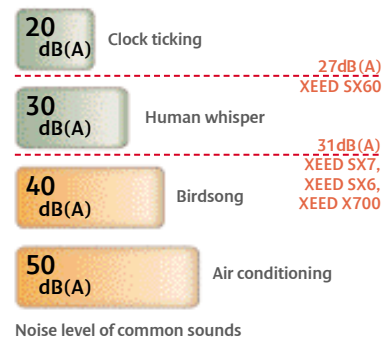
Each XEED model is equipped with a wide-angle Canon 1.7x zoom lens, allowing for flexible projector placement. The 1.7x zoom enables a greater range of throw distances, while the wide-angle lens creates large images from short range. Each powered lens is operable via the projector's control panel and remote control, for ultimate ease of use.

OUTSTANDING CONTRAST

High contrast helps to bring each projected image to life. The advanced colour separation and recombination system in every XEED model gives a contrast ratio of 1000:1 for vivid colours and deeper darker blacks. In Home Cinema mode, the XEED SX60 drops to quiet operation and boosts contrast to 2000:1, for faithful projection of High Definition movies.

QUIET AND COMPACT

Despite their compact form, XEED projectors offer performance comparable to many heavyweight installation projectors. Advanced AISYS technology achieves a more efficient illumination system, so less cooling is required and fan noise is reduced. In Quiet Mode the XEED SX60 is virtually silent at 27dBA – the XEED SX7, XEED SX6 and XEED X700 operate at just 31dBA in Quiet Mode.



AUTOMATIC INTELLIGENCE

Auto Input Selection detects the active input terminal and configures itself accordingly.

Auto Screen Colour Correction automatically compensates for the colour of the projection surface to deliver perfect images with natural-looking colours.



Original Image



Screen Colour Correction Off



Screen Colour Correction On

Auto Focus automatically sets the projector focus to the optimum position, taking into account throw distance and projection angle.

Auto Vertical Keystone Correction compensates for projector tilt up to +/- 20 degrees, ensuring a rectangular image is projected.



Without Auto Focus and Keystone Correction



Focus and Keystone are adjusted automatically, in a matter of seconds

XEED SX7

BRIGHTER THINKING



Superior brightness. Perfect detail.

The flagship model of the range - the XEED SX7 - is ideal for boardrooms, large venues and AV installations. Delivering an ultra-bright 4000 lumens projection at SXGA+ resolution, the XEED SX7 incorporates Canon's unique AISYS optical system for high brightness, high contrast images with seamless LCOS quality.

**HD
ready**

AISYS
Aspectual Illumination
System

- Native SXGA+ resolution and LCOS technology for seamless, lattice-free images
- Canon's Advanced AISYS Optical System delivers an ultra-bright 4000 lumens for clear projection, even in daylight and larger venues
- 1000:1 contrast ratio for vivid colours and deep blacks
- Fully automatic setup: Auto Focus, Auto Keystone Correction, Auto Screen Colour Correction and Auto Input Selection
- Canon powered wide-angle 1.7x zoom lens for flexible projector placement
- Just 31dBA operation in Quiet Mode
- HD Ready, with HDCP-enabled DVI-port for pin-sharp images from digital sources, including encrypted content
- Support for Adobe RGB and sRGB colour spaces, with new bright sRGB mode
- Optional Ethernet network adaptor



CONNECTIVITY

VIDEO INPUT AND OUTPUT

- 1. DVI-I 29-pin**
Digital RGB / Digital Video / Analogue RGB Input 1
- 2. Mini D-sub 15-pin**
Analogue RGB Input 2
(Component/SCART via adaptor cable)
- 3. Mini D-sub 15-pin**
Analogue RGB (Monitor) Output
- 4. Mini DIN 4-pin**
S-Video Input
- 5. RCA x 1**
Composite Video Input

- 3. Mini D-sub 15-pin**
Analogue RGB (Monitor) Output

- 4. Mini DIN 4-pin**
S-Video Input

- 5. RCA x 1**
Composite Video Input

AUDIO INPUT AND OUTPUT

- 6,7,8. 3.5mm² mini-jack x3**
Stereo Audio Input 1 / Input 2 / Input 3

- 9. 3.5mm² mini-jack**
Stereo Audio Output (Variable level)

PROJECTOR CONTROL

- 10. USB Type 'B'**
USB Mouse Control

- 11. Mini-DIN 8-pin**
Service Port



ACCESSORIES

In-Box Accessories

Remote Control (with batteries)
Soft Case
DVI-I Computer Connection Cable
Component Video Cable
AC Mains Power Cable
USB Cable
Lens Cap

Remote Control

Optional Accessories

Replacement Lamp: RS-LP04
Ceiling Mounting Bracket: RS-CL06
SCART cable: LV-CA31
RS-232C control cable: RS-CA01
VGA extension cable: LC-CA02
Network Adaptor: RS-NA01

Ceiling Attachment

XEED SX6

BRIGHTER THINKING



Superior projection for enhanced presentations.

Packed with powerful technology, the XEED SX6 is the ideal projector for maximum impact, high quality presentations. LCOS technology combines with SXGA+ resolution and Canon's unique AISYS optical system to provide detailed, seamless projection. The XEED SX6 offers advanced colour reproduction for graphics specialists.

**HD
ready**

AISYS
Aspectual Illumination
System

- Native SXGA+ resolution and LCOS technology for seamless, lattice-free images
- Canon's Advanced AISYS Optical System delivers a bright 3500 lumens, for clear projection even in daylight conditions and medium-sized venues
- 1000:1 contrast ratio for vivid colours and deep blacks
- Fully automatic setup: Auto Focus, Auto Keystone Correction, Auto Screen Colour Correction and Auto Input Selection
- Canon powered wide-angle 1.7x zoom lens for flexible projector placement
- Just 31dBA operation in Quiet Mode
- HD Ready, with HDCP-enabled DVI-port for pin-sharp images from digital sources, including encrypted content
- Support for Adobe RGB and sRGB colour spaces
- Optional Ethernet network adaptor



CONNECTIVITY

VIDEO INPUT AND OUTPUT

- 1. DVI-I 29-pin**
Digital RGB / Digital Video / Analogue RGB Input 1
- 2. Mini D-sub 15-pin**
Analogue RGB Input 2 (Component / SCART via adaptor cable)
- 3. Mini D-sub 15-pin**
Analogue RGB (Monitor) Output
- 4. Min-DIN 4-pin**
S-Video Input
- 5. RCA×1**
Composite Video Input



AUDIO INPUT AND OUTPUT

- 6. 3.5mm² mini-jack**
Stereo Audio Input

PROJECTOR CONTROL

- 7. USB Type 'B'**
USB Mouse Control
- 8. Mini-DIN 8-pin**
Service Port

ACCESSORIES

In-Box Accessories

Remote Control (with batteries)
Soft Case
DVI-I Computer Connection Cable
Component Video Cable
AC Mains Power Cable
USB Cable
Lens Cap



Soft Case

Optional Accessories

Replacement Lamp: RS-LP02
Ceiling Mounting Bracket: RS-CL06
SCART cable: LV-CA31
RS-232C control cable: LV-CA34
VGA extension cable: LV-CA02
Network adaptor: RS-NA01



Replacement Lamp

XEED SX60

BRIGHTER THINKING



Maximum impact, minimum noise.

The XEED SX60 delivers bright, high contrast projection for crystal clear presentations and video playback. Operating at just 27dBA in Quiet mode, it offers near silent projection. A dedicated Home Cinema mode delivers superb moving image quality to business users and film enthusiasts alike.

**HD
ready**

AISYS
Aspectual Illumination
System

- Native SXGA+ resolution and LCOS technology for seamless, lattice-free images
- Canon's AISYS optical system delivers a bright 2500 lumens, for clear projection even in daylight conditions
- Home Cinema mode with 2000:1 contrast ratio, for enhanced images during movie playback
- 1000:1 contrast ratio for vivid images and deep colours
- Virtually silent operation, just 27dBA in Quiet Mode
- Canon powered wide-angle 1.7x zoom lens for flexible projector placement
- Fully automatic setup: Auto Focus, Auto Keystone Correction, Auto Screen Colour Correction and Auto Input Selection
- HD Ready, with HDCP-enabled DVI-port for pin-sharp images from digital sources, including encrypted content
- Support for sRGB colour space
- Optional Ethernet network adaptor



CONNECTIVITY

VIDEO INPUT AND OUTPUT

- 1. DVI-I 29-pin**
Digital RGB / Digital Video / Analogue RGB Input 1
- 2. Mini D-sub 15-pin**
Analogue RGB input 2 (Component / SCART via adaptor cable)



- 3. Mini D-sub 15-pin**
Analogue RGB (Monitor) output

- 4. Mini-DIN 4-pin**
S-Video Input

- 5. RCA×1**
Composite Video Input

AUDIO INPUT AND OUTPUT

- 6. 3.5mm² mini-jack**
Stereo Audio Input

PROJECTOR CONTROL

- 7. USB Type 'B'**
USB Mouse Control
- 8. Mini-DIN 8-pin**
Service Port

ACCESSORIES

In-Box Accessories

Remote Control (with batteries)
Soft Case
DVI-I Computer Connection Cable
Component Video Cable
AC Mains Power Cable
USB Cable
Lens cap



Component
Video Cable



Scart Cable

Optional Accessories

Replacement Lamp: RS-LP03
Ceiling Mounting Bracket: RS-CL06
SCART cable: LV-CA31
RS-232C control cable: RS-CA01
VGA extension cable: LV-CA02
Network adaptor: RS-NA01

XEED X700

BRIGHTER THINKING



Startling brightness. Seamless clarity.

When brightness and image quality are essential, the XEED X700 provides 4000 lumens at XGA resolution. Smooth LCOS imaging, enhanced by Canon's unique AISYS technology, make the XEED X700 ideal for medium to large spaces, including spaces with high levels of ambient light.



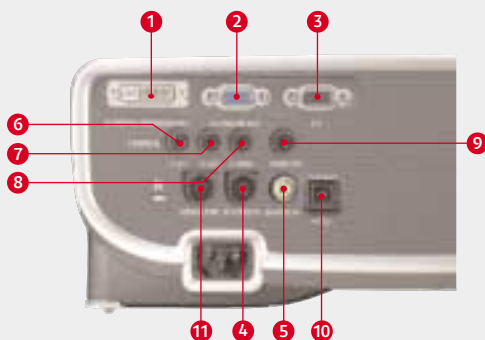
- Native XGA resolution and LCOS technology for seamless images
- Canon Advanced AISYS Optical System delivers an ultra-bright 4000 lumens for clear projection, even in daylight and larger venues
- 1000:1 contrast ratio for vivid colours and deeper blacks
- Fully automatic setup: Auto Focus, Auto Keystone Correction, Auto Screen Colour Correction and Auto Input Selection
- Canon powered wide-angle 1.7x zoom lens for flexible projector placement
- Just 31dBA operation in Quiet Mode
- HDCP-enabled DVI port for pin-sharp images from digital sources, including encrypted content
- Support for sRGB colour space
- Optional Ethernet network adaptor



CONNECTIVITY

VIDEO INPUT AND OUTPUT

- 1. DVI-I 29-pin**
Digital RGB / Digital Video /
Analogue RGB Input 1
- 2. Mini D-sub 15-pin**
Analogue RGB Input 2
(Component/SCART via adaptor cable)
- 3. Mini D-sub 15-pin**
Analogue RGB (Monitor) output



- 4. Mini DIN 4-pin**
S-Video Input

- 5. RCA x 1**
Composite Video Input

AUDIO INPUT AND OUTPUT

- 6, 7, 8. 3.5mm² mini-jack x3**
Stereo Audio Input 1 / Input 2 /
Input 3

- 9. 3.5mm² mini-jack**
Stereo Audio Output (Variable level)

PROJECTOR CONTROL

- 10. USB Type 'B'**
USB Mouse Control

- 11. Mini-DIN 8-pin**
Service Port

ACCESSORIES



*DVI-I Computer
Connection Cable*



Network Adaptor

In-Box Accessories

Remote Control (with batteries)
Soft Case
DVI-I Computer Connection Cable
Component Video Cable
AC Mains Power Cable
USB Cable
Lens cap

Optional Accessories

Replacement Lamp: RS-LP04
Ceiling Mounting Bracket: RS-CL06
SCART cable: LV-CA31
RS-232C control cable: RS-CA01
VGA extension cable: LC-CA02
Network adaptor: RS-NA01

Specifications

XEED SX7



XEED SX6



XEED SX60



XEED X700

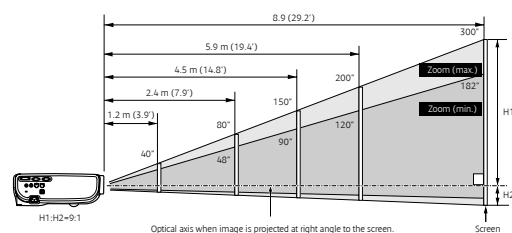


MULTIMEDIA PROJECTOR Product Class	Ultra-Portable	Ultra-Portable	Ultra-Portable	Ultra-Portable
LCD PANEL Type Size and Number Aspect Ratio Native Resolution	LCOS Reflective Display, TFT Active Matrix 0.7" diagonal (15mm x 11mm), 3 panels 4:3 1400 x 1050 (SXGA+), 1470000 pixels	LCOS Reflective Display, TFT Active Matrix 0.7" diagonal (15mm x 11mm), 3 panels 4:3 1400 x 1050 (SXGA+), 1470000 pixels	LCOS Reflective Display, TFT Active Matrix 0.7" diagonal (15mm x 11mm), 3 panels 4:3 1400 x 1050 (SXGA+), 1470000 pixels	LCOS Reflective Display, TFT Active Matrix 0.7" diagonal (15mm x 11mm), 3 panels 4:3 1024 x 768 (XGA), 786432 pixels
OPTICS Lamp Type Lens F Number and Focal Length Zoom Magnification and Control Focus Control Lens Shift	275W NSH (AC) F1.85 - F2.5; f=21.7 - 35.8mm 1.7x Motorised Motorised Auto Focus 9:1, fixed	270W NSH F1.85 - F2.5; f=21.7 - 35.8mm 1.7x Motorised Motorised Auto Focus 9:1, fixed	180W NSH F1.85 - F2.5; f=21.7 - 35.8mm 1.7x Motorised Motorised Auto Focus 9:1, fixed	275W NSH (AC) F1.85 - F2.5; f=21.7 - 35.8mm 1.7x Motorised Motorised Auto Focus 9:1, fixed
IMAGE AND AUDIO Brightness Brightness Uniformity Contrast Ratio Projection Distance Coverage Screen Size Digital Zoom Magnification Keystone Correction Range Digital RGB Compatibility Analogue RGB Compatibility Component Video Scan Systems Video / S-Video Colour Systems Scanning Frequency Display Modes Image Enhancement Built-In Audio	4000 lumens 88% 1000:1 (full on / full off) 1.2m - 9.0m (3.0m - 4.9m for 100" image) 40" - 300" (81 x 61cm - 610 x 457cm) 1x - 12x Vertical: +/- 20° (Auto / Manual) Horizontal: +/- 20° (Manual) D-SXGA+ / D-SXGA / D-WXGA / D-XGA / D-SVGA / D-VGA UXGA (compressed) / SXGA+ / SXGA / WXGA / XGA / SVGA / VGA 1080i / 1035i / 720p / 575p / 575i / 480p / 480i PAL / PAL-M / PAL-N / NTSC / NTSC4.43 / SECAM Horizontal: 15-100kHz, Vertical: 50-100Hz, Clock: 170MHz Standard, Presentation, Movie & Photo, Adobe RGB, sRGB 12-bit Digital Gamma Correction, 6-axis Colour Adjust 1.0W RMS, Monaural	3500 lumens 88% 1000:1 (full on / full off) 1.2m - 9.0m (3.0m - 4.9m for 100" image) 40" - 300" (81 x 61cm - 610 x 457cm) 1x - 12x Vertical: +/- 20° (Auto / Manual) Horizontal: +/- 20° (Manual) D-SXGA+ / D-SXGA / D-WXGA / D-XGA / D-SVGA / D-VGA UXGA (compressed) / SXGA+ / SXGA / WXGA / XGA / SVGA / VGA 1080i / 1035i / 720p / 575p / 575i / 480p / 480i PAL / PAL-M / PAL-N / NTSC / NTSC4.43 / SECAM Horizontal: 15-100kHz, Vertical: 50-100Hz, Clock: 170MHz Standard, Presentation, Movie & Photo, Adobe RGB, sRGB 12-bit Digital Gamma Correction, 6-axis Colour Adjust 1.0W RMS, Monaural	2500 lumens 88% 1000:1 (full on / full off) 2000:1 (full on / full off) in Home Cinema Mode 1.2m - 9.0m (3.0m - 4.9m for 100" image) 40" - 300" (81 x 61cm - 610 x 457cm) 1x - 12x Vertical: +/- 20° (Auto / Manual) Horizontal: +/- 20° (Manual) D-SXGA+ / D-SXGA / D-WXGA / D-XGA / D-SVGA / D-VGA UXGA (compressed) / SXGA+ / SXGA / WXGA / XGA / SVGA / VGA 1080i / 1035i / 720p / 575p / 575i / 480p / 480i PAL / PAL-M / PAL-N / NTSC / NTSC4.43 / SECAM Horizontal: 15-100kHz, Vertical: 50-100Hz, Clock: 170MHz Standard, Presentation, Movie, Home Cinema, sRGB 12-bit Digital Gamma Correction, 6-axis Colour Adjust 1.0W RMS, Monaural	4000 lumens 88% 1000:1 (full on / full off) 1.2m - 9.0m (3.0 - 4.9m for 100" image) 40" - 300" (81 x 61cm - 610 x 457cm) 1x - 12x Vertical: +/- 20° (Auto / Manual) Horizontal: +/- 20° (Manual) D-XGA / D-SVGA / D-VGA UXGA (compressed) / SXGA+ (compressed) / SXGA (compressed) / WXGA (compressed) / XGA / SVGA / VGA 1080i / 1035i / 720p / 575p / 575i / 480p / 480i PAL / PAL-M / PAL-N / NTSC / NTSC4.43 / SECAM Horizontal: 15-100kHz, Vertical: 50-100Hz, Clock: 170MHz Standard, Presentation, Movie, sRGB 12-bit Digital Gamma Correction, 6-axis Colour Adjust 1.0W RMS, Monaural
CONNECTORS Digital RGB / Analogue RGB Input 1 Analogue RGB Input 2 Analogue RGB Output Component Video Input S-Video Input Composite Video Input Audio Input 1 Audio Input 2 Audio Input 3 Audio Output Mouse Control Service Port / Projector Control	DVI-I 29-pin (HDCP compatible) Mini D-Sub 15-pin Mini D-Sub 15-pin Via 3x RCA adaptor cable (supplied) Mini-DIN 4-pin RCA x 1 3.5mm ² stereo mini-jack 3.5mm ² stereo mini-jack 3.5mm ² stereo mini-jack 3.5mm ² stereo mini-jack (variable level) USB Type B Mini-DIN 8-pin	DVI-I 29-pin (HDCP compatible) Mini D-Sub 15-pin Mini D-Sub 15-pin Via 3x RCA adaptor cable (supplied) Mini-DIN 4-pin RCA x 1 3.5mm ² stereo mini-jack - - - USB Type B Mini-DIN 8-pin	DVI-I 29-pin (HDCP compatible) Mini D-Sub 15-pin Mini D-Sub 15-pin Via 3x RCA adaptor cable (supplied) Mini-DIN 4-pin RCA x 1 3.5mm ² stereo mini-jack - - - USB Type B Mini-DIN 8-pin	DVI-I 29-pin (HDCP compatible) Mini D-Sub 15-pin Mini D-Sub 15-pin Via 3x RCA adaptor cable (supplied) Mini-DIN 4-pin RCA x 1 3.5mm ² stereo mini-jack 3.5mm ² stereo mini-jack 3.5mm ² stereo mini-jack 3.5mm ² stereo mini-jack (variable level) USB Type B Mini-DIN 8-pin
MECHANISMS Front Elevation Mechanism Maximum Elevation Angle	One-touch mechanical foot 10°	One-touch mechanical foot 10°	One-touch mechanical foot 10°	One-touch mechanical foot 10°
RATINGS Dimensions (W x H x D) Weight Rated Supply Voltage Power Consumption Noise Level Operating Environment Storage Environment Warranty	266 x 114 x 336mm 4.8kg 100V - 240V AC, 50/60Hz Normal Mode: 360W / Quiet Mode: 290W / Standby: 7W Normal Mode: 35dBA / Quiet Mode: 31dBA +5°C to +35°C -30°C to +60°C 3 years	266 x 114 x 336mm 4.7kg 100V - 240V AC, 50/60Hz Normal Mode: 355W / Quiet Mode: 290W / Standby: 7W Normal Mode: 35dBA / Quiet Mode: 31dBA +5°C to +35°C -30°C to +60°C 3 years	266 x 114 x 336mm 4.6kg 100V - 240V AC, 50/60Hz Normal Mode: 250W / Quiet Mode: 225W / Standby: 7W Normal Mode: 30dBA / Quiet Mode: 27dBA +5°C to +35°C -30°C to +60°C 3 years	266 x 114 x 336mm 4.8kg 100V - 240V AC, 50/60Hz Normal Mode: 360W / Quiet Mode: 290W / Standby: 7W Normal Mode: 35dBA / Quiet Mode: 31dBA +5°C to +35°C -30°C to +60°C 3 years

Some images are simulated for clarity of reproduction. All data is based on Canon's standard testing methods.

Specifications are subject to change without notice. ™ and ®: All company and/or product names are trademarks and/or registered trademarks of their respective manufacturers in their markets and/or countries.

TRUE THROW DISTANCES FOR THE XEED PROJECTOR RANGE								
Screen Size	40		60		80		100	
	inches	cm	inches	cm	inches	cm	inches	cm
Projection Distance	122 x 91		163 x 122		203 x 152		274 x 206	
	81 x 61		122 x 91		163 x 122		203 x 152	
Zoom max	1.2m		1.8m		2.4m		3.0m	
	2.0m		2.9m		3.9m		4.9m	
Zoom min	2.0m		2.9m		3.9m		4.9m	
	2.0m		2.9m		3.9m		4.9m	
Height, H1	55cm		82cm		110cm		137cm	
	55cm		82cm		110cm		137cm	
Height, H2	6cm		9cm		12cm		15cm	
	6cm		9cm		12cm		15cm	



To learn more about the XEED multimedia projector range, visit www.canon-europe.com/xeed

you can
Canon

Canon Inc.
www.canon.com

Canon Europa N.V.
www.canon-europe.com

English-UK Edition
© Canon Europa N.V., 2007 (0807)

Canon (UK) Ltd
Woodhatch, Reigate
Surrey RH2 8BF
Telephone No: 08000 353535
Facsimile No: 01737 220022
www.canon.co.uk

Canon Ireland
Arena Road,
Sandyford Industrial Estate
Dublin 18, Ireland
Telephone No: 01-2052400
Facsimile No: 01-2958141
www.canon.ie



© 1986 Panda symbol WWF
© WWF Registered Trademark