

RLM-W8

8,000 lumens three-chip DLP™, WUXGA projector



Barco's RLM-W8 brings the saturated colors of three-chip DLP projection to events and fixed installations, at the price of single-chip DLP technology. With an **enhanced contrast**, quick and creative stacking options as well as **built-in warping** capabilities for curved surfaces, Barco's RLM-W8 is a versatile choice for mid- to large-sized venues. In addition, it features **blending** technology to create seamless composite images across a canvas of any size. The RLM-W8 continues the RLM line's tradition of **silence** as well as **low energy** consumption.

Key benefits

- WUXGA (1920x1200) resolution
- 8,000 lumens
- 10x more silent than its rivals
- 33% lower power consumption
- 2,200:1 contrast ratio
- Geometry correction for curved surfaces
- Edge blending to create continuous, seamless images

BARCO

Visibly yours

RLM-W8 technical specifications

Light output (typical)		7,300 ANSI lumens ($\pm 10\%$) 8,000 center lumens ($\pm 10\%$)	Service programs		
Contrast (standard)		2,000:1 full field			
Resolution (native)		1,920 x 1,200 pixels			
Display technology		3 x DLP 0.67" DMD			
Lamp power		2 x 330W UHP			
Brightness uniformity (standard)		95%			
Scenergix		horizontal and vertical edge blending			
Inputs		2x HDMI (HDCP 1.3); HDSOI 3G			
		1x YUV1 (on RCA/cinch)			
		1x Composite video (on RCA/cinch)			
		1x S-Video (on 4-pin mini-DIN)			
		1x RGBHV/YUV2 (on VGA/BNC)			
Picture-in-picture		1 main window, 1 PiP window			
Pixel clock		165 MHz			
Communication ports		10/100 Mb/s Ethernet (on RJ45)			
		RS-232 (on D9)			
		IR external			
		2x 12V trigger			
Available zoom lenses		RLD (1.45 ~ 1.74:1)	R9832742		
		RLD (1.74 ~ 2.17:1)	R9832743		
		RLD (2.17 ~ 2.90:1)	R9832744		
		RLD (2.90 ~ 4.34:1)	R9832745		
		RLD (4.34 ~ 6.76:1)	R9832746		
Available fixed focal lenses		RLD (0.77:1)	R9832740		
		RLD (1.16:1)	R9832741		
Lens shift (max)		Hor: $\pm 30\%$ - Vert: $\pm 100\%$			
AC power		100 - 240 VAC ($\pm 10\%$)/50-60 Hz			
Power consumption		800 W (at 240V)			
Operating temperature		0 ~ 40°C			
Noise level	normal operation	39 dB			
	Eco mode	32 dB			
Weight		26 kg (57.3 lbs)			
Dimensions (H x W x L)		247 x 516.7 x 669.74 mm (9.72" x 20.34" x 26.37")			
Order info:	Rental Pack	R9006312B2	(2x RLM-W8 w/lens + stacking frame + 2 spare lamps)		
	CAV Pack	R9006313B1	(RLM-W8 w/lens + ceiling mount kit + 2 spare lamps)		
	RLM-W8 (body only)	R9006310			
	RLM-W8 (incl. lens)	R9006311B1			
	RLM-W8 Extended Warranty	R9899702			
RLM-W8 Priority Service		R9899703			

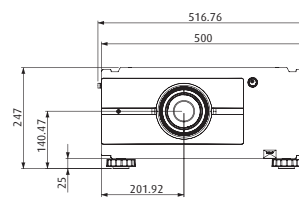
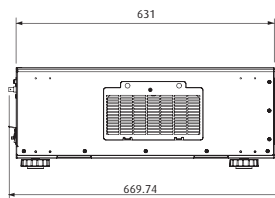
(*) included standard



M00386-R00-0910-DS

DLP™ technology by Texas Instruments offers crystal clear images with superior quality. DLP is a trademark of Texas Instruments.

The information and data given are typical for the equipment described. However any individual item is subject to change without any notice. The latest version of this brochure can be found on www.barco.com.



Barco nv
President Kennedypark 35, 8500 Kortrijk - Belgium
Tel. +32 56 36 89 70 - Fax +32 56 36 83 86
email: sales.events@barco.com

BARCO

Visibly yours

www.barco.com