

Complete AV Solution for classroom, conference room and huddle room



6x1 Multi-Format HDBaseT™ Switcher/Scaler
[model no. AT-UHD-CLSO-612]

HDBaseT™ Transmitters



HDMI/VGA Wall Plate HDBaseT™ Out
[model no. AT-HDVS-TX-WP]



3x1 Switcher with HDBaseT™ Out
[model no. AT-HDVS-TX]

HDBaseT™ Receiver



HDBaseT™ Extender/Scaler
[model no. AT-HDVS-RX]

Regardless the size of the environmental space it is always essential to have a reliable signal. Some basic fundamentals will always need to be considered like distance, control and power. With Atlona's robust technology we can ensure a hassle free application every time.



Digital Classroom Solution

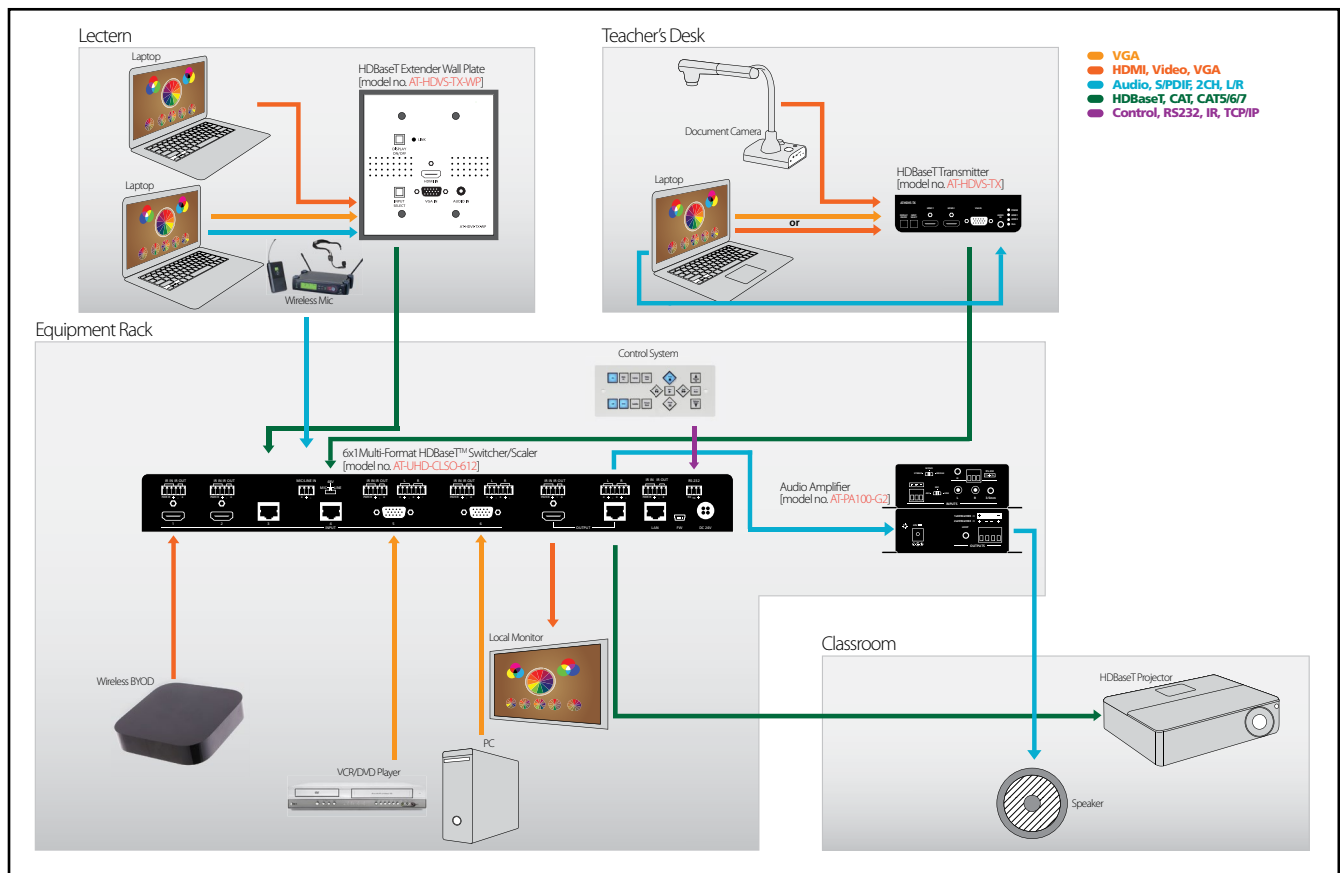
Challenge

Classrooms challenge designers like no other space – a rich variety of sources and budgets that squeeze tightly. VCRs, VGA PCs, HDMI PCs, Blu-rays, document cameras, iPads and interactive boards all need to be integrated at a price low enough to replicated tens, hundreds, or even thousands of times.

Solution

Atlona enables these systems to be integrated simply, powerfully, and efficiently. We combine multiple functions in a single box, while allowing you to choose the control and audio systems that match the needs of the classroom. With switching, scaling, HDBaseT™ extension for inputs and outputs, audio de-embedding and more in a small box you can be certain Atlona technology supports the teaching!

Application Diagram & Specifications



Model	Description	Inputs	Outputs	Benefits
AT-UHD-CLSO-612	Multi-format switcher	2 - HDMI 2 - HDBaseT™ 2 - Analog audio/video 1 - Microphone (ducking)	1 - HDBaseT™ 1 - HDMI (mirrored) 1 - Balanced, analog audio	Simplifies design, installation and operation of a basic AV systems with inputs from up to 230 feet from the switcher, analog (RGBHV, YPbPr, S-, Comp) sources as well as HDMI. Analog audio outputs with control simplify system integration. RS-232, IR, and TCP/IP control.
AT-HDVS-TX-WP	Wall plate	1 - HDMI 1 - VGA/3.5mm audio	1 - HDBaseT	Input from PCs with VGA or HDMI output. Powered from CLSO-612 at distances up to 230 feet (70 m). Switch between inputs with control via RS-232 or auto-switch.
AT-HDVS-TX	Module	2 - HDMI 1 - VGA/3.5mm audio	1 - HDBaseT™	Input from PCs with VGA or HDMI output. Powered from CLSO-612 at distances up to 230 feet (70 m). Switch between inputs with control via RS-232 or auto-switch.
AT-PA100-G2	Audio Amplifier	1 - RCA L/R 1 - 3.5mm L/R 1 - Microphone	1 - Stereo Speaker 1 - 3.5mm loop	Drive speaker with 40 watts (stereo or mono) of power for better sound in the classroom. Control via RS-232.

Digital Conference Room Solution

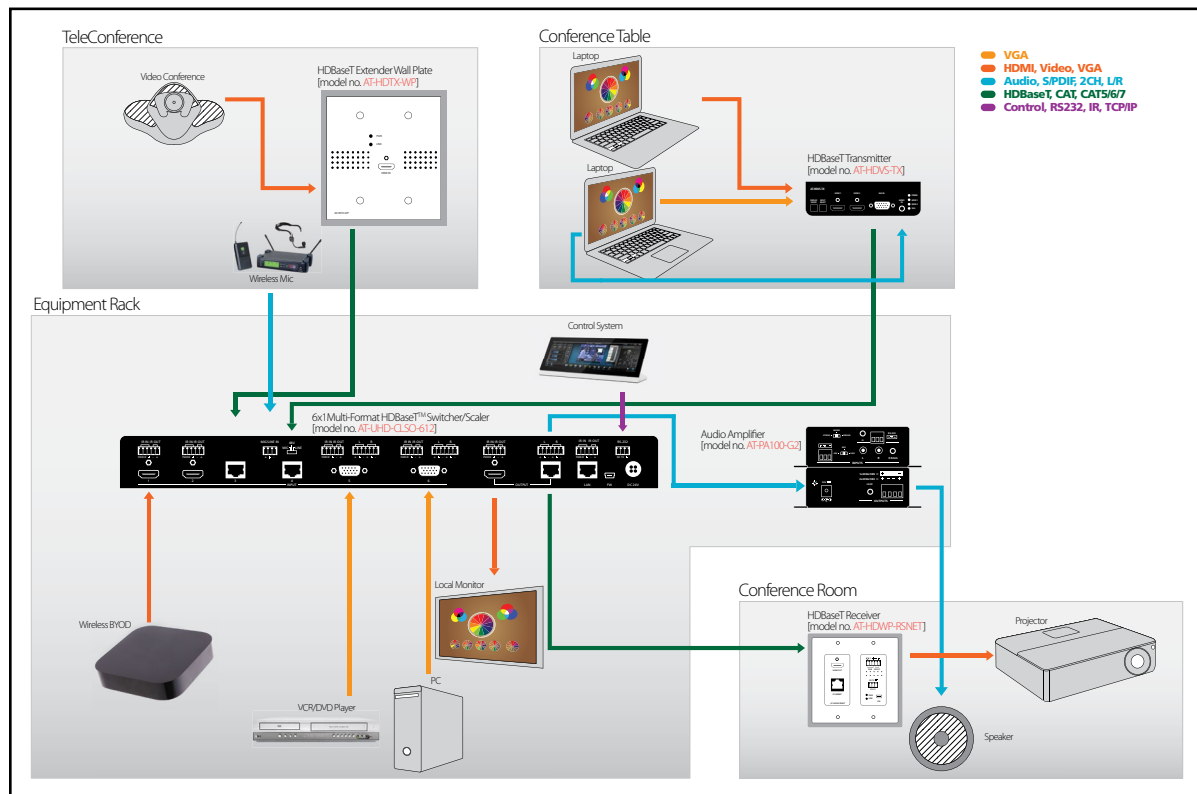
Challenge

Better communication drives better business! And communications technology needs to operate simply and smoothly so the technology doesn't overshadow the sales presentations, new ideas, and team sharing that define business meetings.

Solution

Atlona's switchers offer the features to delight the AV system designer, empower the presenter, and excite the audience, all at a price that thrills the CFO. We offer drivers for most control systems and work with any amplifier so it is simple to optimize the system's operation and provide great sound for the space. With switching, scaling, HDBaseT™ extension for inputs and outputs, audio de-embedding and more in a small box you can be certain Atlona technology supports the communication!

Application Diagram & Specifications



Model	Description	Inputs	Outputs	Benefits
AT-UHD-CLSO-612	Multi-format switcher	2 - HDMI 2 - HDBaseT™ 2 - Analog audio/video 1 - Microphone (ducking)	1 - HDBaseT™ 1 - HDMI (mirrored) 1 - Balanced, analog audio	Simplifies design, installation and operation of a basic AV systems with inputs from up to 230 feet from the switcher, analog (RGBHV, YPbPr, S-, Comp) sources as well as HDMI. Analog audio outputs with control simplify system integration. RS-232, IR, and TCP/IP control.
AT-HDVS-TX-WP	Wall Plate	1 - HDMI 1 - VGA/3.5mm audio	1 - HDBaseT™	Input from PCs with VGA or HDMI output. Powered from CLSO-612 at distances up to 230 feet (70 m). Switch between inputs with control via RS-232 or auto-switch.
AT-HDTP-WP	Wall Plate	1 - HDMI	1 - HDBaseT	Input from PCs or other sources with HDMI output. Powered from CLSO-612 at distances up to 230 feet (70 m). Transmit control signals via RS-232 or IR.
AT-HDWP-RSNET	Receiver Wall Plate	1 - HDBaseT™	1 - HDMI 1 - RS-232	Convert HDBaseT™ to HDMI and control for display. Powered from CLSO-612 at distances up to 230 feet (70 m).
AT-PA100-G2	Audio Amplifier	1 - RCA L/R 1 - 3.5mm L/R 1 - Microphone	1 - Stereo Speaker 1 - 3.5mm loop	Drive speaker with 40 watts (stereo or mono) of power for better sound in the classroom. Control via RS-232.

Digital Huddle Room Solution

Challenge

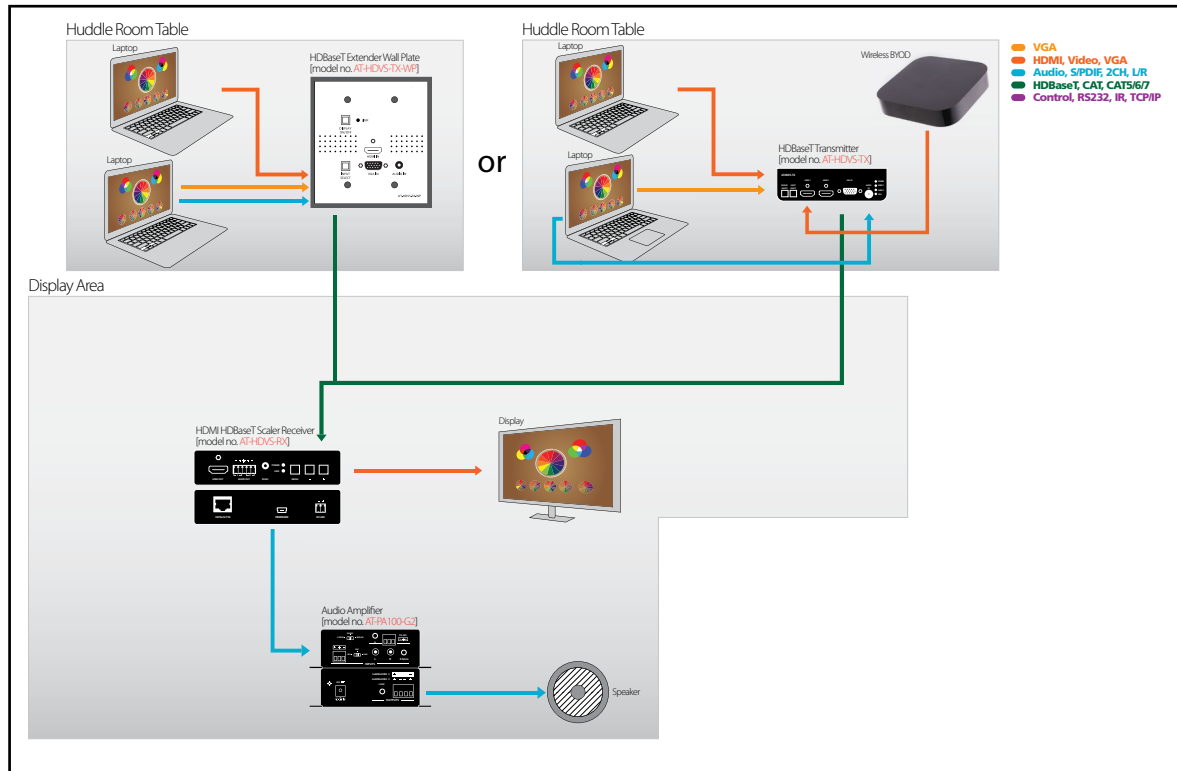
Small meeting areas where 2-3 employees can meet, collaborate, and share ideas are necessary because interaction at a cubicle eliminates confidentiality and interrupts nearby workers. But with small spaces, come small budgets. Low-cost flat panels, simple inputs for a laptop or iPad, and PC based teleconferencing are the components of these basic systems.

Solution

From transmitter / receiver combos to small switchers, Atlona has multiple solutions that enable cost-effective huddle rooms. Integrated control, audio de-embedding and switching make the design simple and repeatable. Auto control features make it simple for anyone to use these rooms! With switching, scaling, HDBaseT™ extension for inputs and outputs, and audio de-embedding in a small box you can be certain Atlona technology supports collaboration!



Application Diagram & Specifications



Model	Description	Inputs	Outputs	Benefits
AT-HDVS-TX-WP	Wall plate	1 - HDMI 1 - VGA/3.5mm audio	1 - HDBaseT™	Input from PCs with VGA or HDMI output. Powered from AT-HDVS-RX at distances up to 230 feet (70 m). Switch between inputs with control via RS-232 or auto-switch.
AT-HDVS-TX	Module	2 - HDMI 1 - VGA/3.5mm audio	1 - HDBaseT™	Input from PCs with VGA or HDMI output. Powered from AT-HDVS-RX at distances up to 230 feet (70 m). Switch between inputs with control via RS-232 or auto-switch.
AT-HDVS-RX	Receiver	1-HDBaseT™	1 - HDMI 1 - Balanced, Analog Audio 1 - RS-232	Scaler with HDBaseT™ input. Powers HDVS-TX-WP at distances up to 230 feet (70 m). Transmit control signals from HDVS-TX via RS-232 to display. De-embeds balanced, analog audio.
AT-PA100-G2	Audio Amplifier	1 - RCA L/R 1 - 3.5mm L/R 1 - Microphone	1 - Stereo Speaker 1 - 3.5mm loop	Drive speaker with 40 watts (stereo or mono) of power for better sound in the classroom. Control via RS-232.