

**Kramer Electronics, Ltd.**



# **USER MANUAL**

**Model:**

**UTBUS-1**

*Under the Table Connection Bus*

**Contents**

<b>1</b>	<b>Introduction</b>	<b>1</b>
<b>2</b>	<b>Getting Started</b>	<b>1</b>
2.1	Quick Start	1
<b>3</b>	<b>Overview</b>	<b>3</b>
<b>4</b>	<b>Your UTBUS-1 Connection Bus</b>	<b>4</b>
<b>5</b>	<b>Installing the UTBUS-1</b>	<b>5</b>
5.1	Installing the Required Wall Plate Inserts	5
5.2	Installing the Cables	6
5.3	Connect the Kramer TOOL or Pico TOOL (Optional)	6
5.4	Securing the UTBUS-1 Enclosure to the Table	7
<b>6</b>	<b>Technical Specifications</b>	<b>8</b>

**Figures**

Figure 1: UTBUS-1 Under a Table	3
Figure 2: UTBUS-1 Under the Table Connection Bus	4
Figure 3: Installing a Kramer TOOL	6
Figure 4: Securing the UTBUS-1 to the Underneath of the Table	7

**Tables**

Table 1: UTBUS-1 Under the Table Connection Bus Features	4
Table 2: Technical Specifications of the UTBUS-1	8

## 1 Introduction

Welcome to Kramer Electronics! Since 1981, Kramer Electronics has been providing a world of unique, creative, and affordable solutions to the vast range of problems that confront the video, audio, presentation, and broadcasting professional on a daily basis. In recent years, we have redesigned and upgraded most of our line, making the best even better! Our 1,000-plus different models now appear in 11 groups<sup>1</sup> that are clearly defined by function.

Congratulations on purchasing your Kramer **UTBUS-1** under-the-table bus, which is ideal for boardrooms, conference and training rooms!

The package includes the following items:

- **UTBUS-1** Under the Table Connection Bus
- Power cord<sup>2</sup>
- Six self-locking ties
- Four mounting wood screws
- This user manual<sup>3</sup>

## 2 Getting Started

We recommend that you:

- Unpack the equipment carefully and save the original box and packaging materials for possible future shipment
- Review the contents of this user manual
- Use Kramer high performance high resolution cables<sup>4</sup>

### 2.1 Quick Start

This Quick start chart summarizes the basic steps when connecting a **UTBUS-1**:

---

1 GROUP 1: Distribution Amplifiers; GROUP 2: Switchers and Matrix Switchers; GROUP 3: Control Systems; GROUP 4: Format/Standards Converters; GROUP 5: Twisted-Pair Solutions; GROUP 6: Specialty AV Products; GROUP 7: Scan Converters and Scalars; GROUP 8: Cables and Connectors; GROUP 9: Room Connectivity; GROUP 10: Accessories and Rack Adapters; GROUP 11: Sierra Products

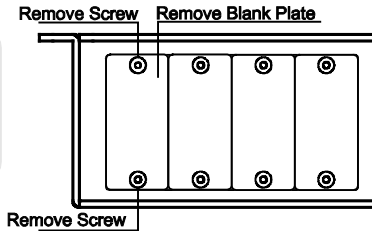
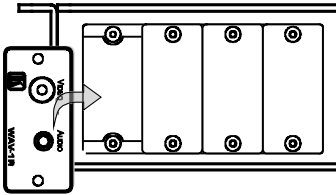
2 We recommend that you use only the power cord supplied with this device

3 Download up-to-date Kramer user manuals from our Web site: <http://www.kramerelectronics.com>

4 The complete list of Kramer cables is on our Web site at <http://www.kramerelectronics.com>

**Step 1: Connect the wall plate items - see section 5.1****A**

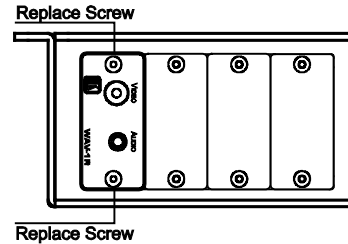
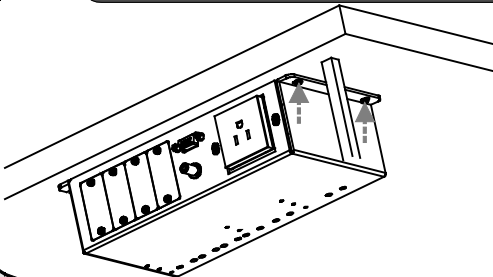
Unscrew the two screws that attach the blank plate to the connecting surface and remove the blank plate (save the two screws).

**B**

Place the required wall plate Insert Item over the opening.

**C**

Reinsert the two screws to affix the wall plate insert in position, and tighten them.

**Step 2: Install the cables - see section 5.2****Step 3: Secure under the table - see section 5.4**

Mark the correct location and insert the four M4.2X16 wood screws into the four rim screw holes and fix the UTBUS-1 to the table.

### 3 Overview

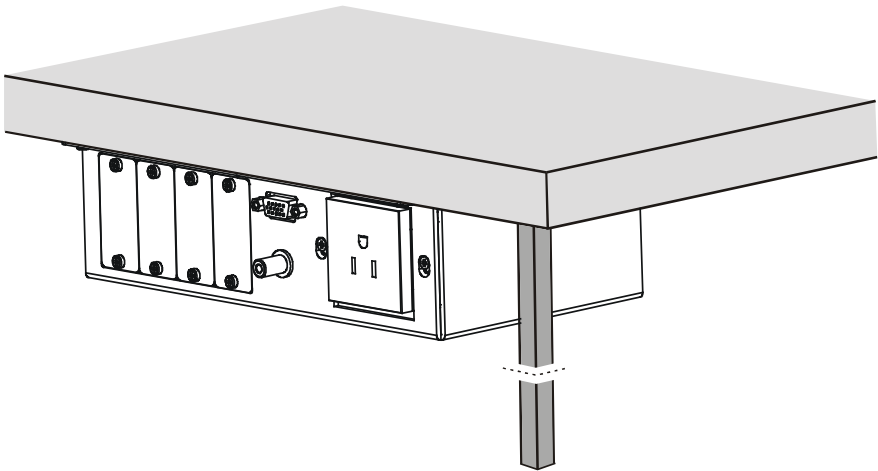
The **UTBUS-1** is a furniture-mounted connection bus that is easily installed underneath a wooden table or podium top. The unit is sturdy, cost-effective, and easy to install.

In addition, the **UTBUS-1**:

- Includes two permanent components suitable for connecting a PC: one 15-pin HD connector and one stereo audio 3.5mm mini jack
- Is modular in design, letting you install up to four wall plate inserts, according to your requirements<sup>1</sup>
- Includes one power socket – available in seven versions: USA, UK, Germany-EU, Belgium-France, South Africa, Australia, and “Universal” (for use anywhere)
- Lets you install a Kramer TOOL or Pico TOOL inside the body of the unit

To achieve the best performance:

- Connect only good quality connection cables, thus avoiding interference, deterioration in signal quality due to poor matching, and elevated noise levels (often associated with low quality cables)
- Avoid interference from neighboring electrical appliances that may adversely influence signal quality and position your Kramer **UTBUS-1** away from moisture, excessive sunlight and dust



*Figure 1: UTBUS-1 Under a Table*

<sup>1</sup> For details of Kramer's wall plate devices and module connectors, see our Web site at <http://www.kramerelectronics.com>

#### 4 Your UTBUS-1 Connection Bus

[Figure 2](#) and [Table 1](#) define the **UTBUS-1** unit:

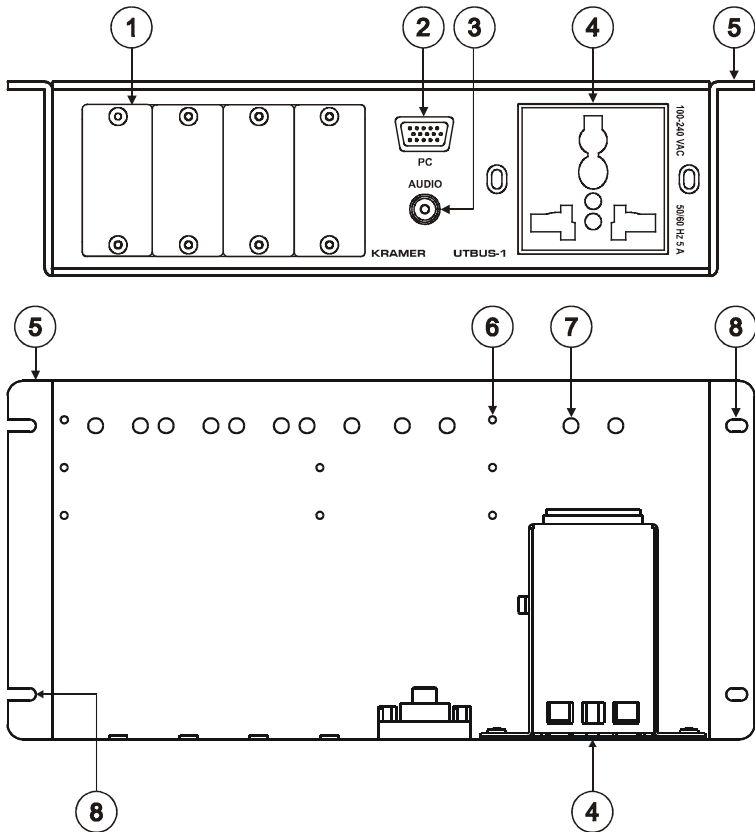


Figure 2: UTBUS-1 Under the Table Connection Bus

Table 1: UTBUS-1 Under the Table Connection Bus Features

#	Feature	Function
1	Blank Plates	Four blank covers that can be replaced with wall plate inserts as required (see section <a href="#">5.1</a> )
2	PC Connector	Computer graphics 15-pin HD (female / female)
3	Audio Connector	3.5mm stereo audio (female / female)
4	Universal Power Socket	Suitable for international power requirements (available with other types of power sockets)
5	Outer Rim	For mounting under the table
6	TOOL Mounting Holes (8)	Screw in the appropriate holes to install a Kramer TOOL or Pico TOOL
7	Tie Holes (12)	Insert the self-locking tie, through the holes to fix the pass-through cables to the inside walls of the unit
8	Rim Screw Holes (4)	For fixing the <b>UTBUS-1</b> under the table (including two open screw holes)

## 5 Installing the UTBUS-1

This section describes how to:

- Mount the required wall plate insert items, see section [5.1](#)
- Connect the cables, see section [5.2](#)
- Connect the Kramer TOOL or Pico TOOL (optional), see section [5.3](#)
- Secure the unit under the table, see section [5.4](#)

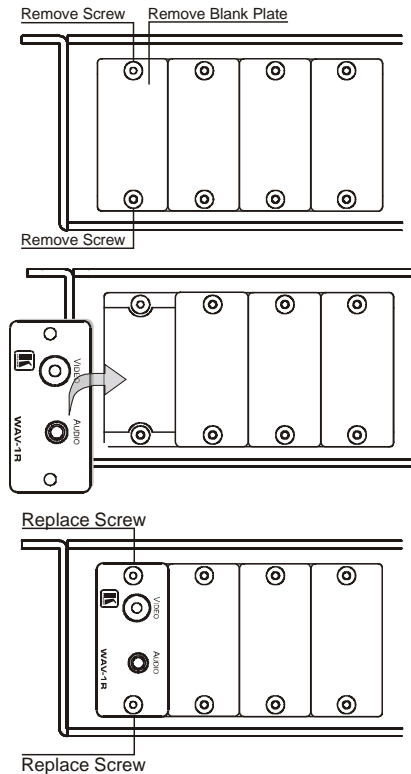
### 5.1 Installing the Required Wall Plate Inserts

By default, the mounting surface includes a power supply and four blank plates for optional video, audio and network connectors.

Each blank plate can be removed and replaced with a Kramer passive wall plate insert<sup>1</sup> or connector module for interfacing A/V type signals, if required.

To install a wall plate insert or connector module, do the following:

1. Unscrew the two screws that attach the blank plate to the connecting surface and remove the blank plate (save the two screws).
2. Place the required wall plate insert item over the opening.
3. Reinsert the two screws to affix the wall plate insert in position, and tighten them.



<sup>1</sup> The complete list of Kramer wall plates and module connectors is on our Web site at <http://www.kramerelectronics.com>

## 5.2 Installing the Cables

To install the cables, do the following:

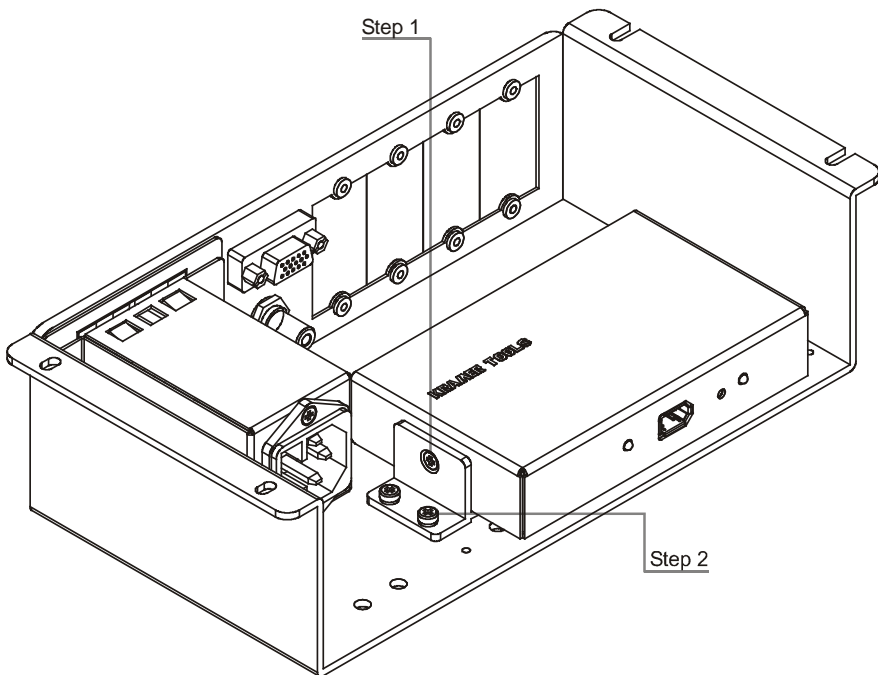
1. Connect the cables to the inside of the unit.
2. Insert the self-locking ties through the tie holes to secure the cables to the inside walls of the enclosure.

## 5.3 Connect the Kramer TOOL or Pico TOOL (Optional)

You can install a Kramer TOOL or Pico TOOL, as illustrated in the example in [Figure 3](#).

To connect the Kramer TOOL to the **UTBUS-1**:

1. Connect the mounting brackets to the Kramer TOOL, as described in the Bracket Installation Kit Instructions<sup>1</sup>.
2. Insert the four 4x3/8" screws into the four TOOL mounting holes and fasten the Kramer TOOL to the inside floor of the **UTBUS-1**.



*Figure 3: Installing a Kramer TOOL*

---

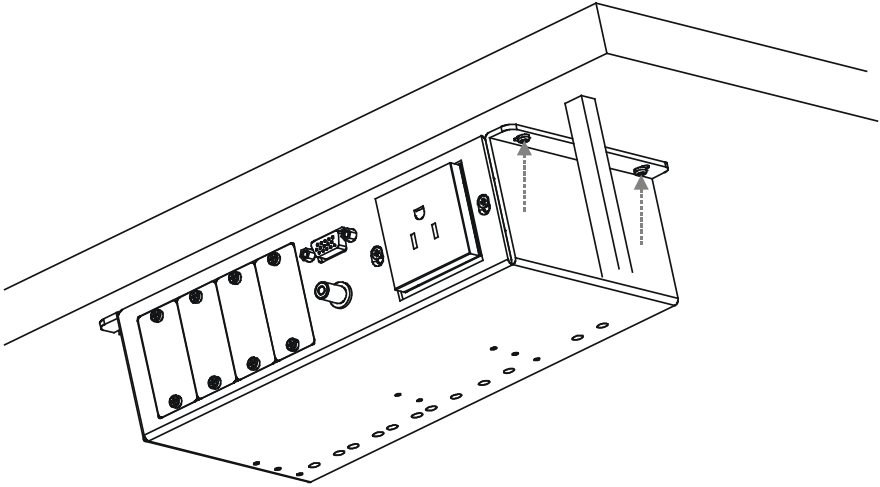
<sup>1</sup> Download up-to-date Kramer user manuals from our Web site: <http://www.kramerelectronics.com>



## 5.4 Securing the UTBUS-1 Enclosure to the Table

To install the **UTBUS-1** underneath the table, as illustrated in [Figure 4](#), do the following:

1. Place the unit to the underside of the table and mark the correct location.
2. Insert the four M4.2X16 wood screws into the four rim screw holes and fix the **UTBUS-1** to the table.



*Figure 4: Securing the UTBUS-1 to the Underneath of the Table*

The **UTBUS-1** is ready for use.

## 6 Technical Specifications

[Table 2](#) includes the technical specifications:

*Table 2: Technical Specifications<sup>1</sup> of the UTBUS-1*

POWER SOURCE (AC power limits):	Universal	100-240V AC, 50/60 Hz, 5A
	USA	100-240V AC, 50/60 Hz, 5A
	UK	100-240V AC, 50/60 Hz, 5A
	Germany and EU	100-240V AC, 50/60 Hz, 5A
	Belgium and France	100-240V AC, 50/60 Hz, 5A
	South Africa	100-240V AC, 50/60 Hz, 5A
	Australia	100-240V AC, 50/60 Hz, 5A
FUSE RATING:	T 6.3A 250V	
OPERATING TEMPERATURE RANGE:	+5 to +45 Deg. Centigrade	
OPERATING HUMIDITY RANGE:	10 to 90% RHL, non-condensing	
STORAGE TEMPERATURE RANGE:	-20 to +70 Deg. Centigrade	
STORAGE HUMIDITY RANGE:	5 to 95% RHL, non-condensing	
DIMENSIONS:	250.2mm x 137.5mm x 65mm (9.85" x 5.41" x 2.56") W, D, H	
WEIGHT:	0.6kg (1.32lbs) approx.	
ACCESSORIES:	Power cord, self locking ties, wood screws	
OPTIONS:	Passive wall plate inserts and interfaces <sup>2</sup>	

<sup>1</sup> Specifications are subject to change without notice

<sup>2</sup> The complete list of Kramer wall plates and module connectors is on our Web site at <http://www.kramerelectronics.com>

---

## LIMITED WARRANTY

Kramer Electronics (hereafter *Kramer*) warrants this product free from defects in material and workmanship under the following terms.

### HOW LONG IS THE WARRANTY

Labor and parts are warranted for seven years from the date of the first customer purchase.

### WHO IS PROTECTED?

Only the first purchase customer may enforce this warranty.

### WHAT IS COVERED AND WHAT IS NOT COVERED

Except as below, this warranty covers all defects in material or workmanship in this product. The following are not covered by the warranty:

1. Any product which is not distributed by Kramer, or which is not purchased from an authorized Kramer dealer. If you are uncertain as to whether a dealer is authorized, please contact Kramer at one of the agents listed in the Web site [www.kramerelectronics.com](http://www.kramerelectronics.com).
2. Any product, on which the serial number has been defaced, modified or removed, or on which the WARRANTY VOID IF TAMPERED sticker has been torn, reattached, removed or otherwise interfered with.
3. Damage, deterioration or malfunction resulting from:
  - i) Accident, misuse, abuse, neglect, fire, water, lightning or other acts of nature
  - ii) Product modification, or failure to follow instructions supplied with the product
  - iii) Repair or attempted repair by anyone not authorized by Kramer
  - iv) Any shipment of the product (claims must be presented to the carrier)
  - v) Removal or installation of the product
  - vi) Any other cause, which does not relate to a product defect
  - vii) Cartons, equipment enclosures, cables or accessories used in conjunction with the product

### WHAT WE WILL PAY FOR AND WHAT WE WILL NOT PAY FOR

We will pay labor and material expenses for covered items. We will not pay for the following:

1. Removal or installations charges.
2. Costs of initial technical adjustments (set-up), including adjustment of user controls or programming. These costs are the responsibility of the Kramer dealer from whom the product was purchased.
3. Shipping charges.

### HOW YOU CAN GET WARRANTY SERVICE

1. To obtain service on your product, you must take or ship it prepaid to any authorized Kramer service center.
2. Whenever warranty service is required, the original dated invoice (or a copy) must be presented as proof of warranty coverage, and should be included in any shipment of the product. Please also include in any mailing a contact name, company, address, and a description of the problem(s).
3. For the name of the nearest Kramer authorized service center, consult your authorized dealer.

### LIMITATION OF IMPLIED WARRANTIES

All implied warranties, including warranties of merchantability and fitness for a particular purpose, are limited in duration to the length of this warranty.

### EXCLUSION OF DAMAGES

The liability of Kramer for any effective products is limited to the repair or replacement of the product at our option. Kramer shall not be liable for:

1. Damage to other property caused by defects in this product, damages based upon inconvenience, loss of use of the product, loss of time, commercial loss; or:
2. Any other damages, whether incidental, consequential or otherwise. Some countries may not allow limitations on how long an implied warranty lasts and/or do not allow the exclusion or limitation of incidental or consequential damages, so the above limitations and exclusions may not apply to you.

This warranty gives you specific legal rights, and you may also have other rights, which vary from place to place.

**NOTE:** All products returned to Kramer for service must have prior approval. This may be obtained from your dealer.

This equipment has been tested to determine compliance with the requirements of:

- EN-50081: "Electromagnetic compatibility (EMC);  
generic emission standard.  
Part 1: Residential, commercial and light industry"
- EN-50082: "Electromagnetic compatibility (EMC) generic immunity standard.  
Part 1: Residential, commercial and light industry environment".
- CFR-47: FCC Rules and Regulations:  
Part 15: "Radio frequency devices  
Subpart B Unintentional radiators"

### CAUTION!

- ☒ Servicing the machines can only be done by an authorized Kramer technician. Any user who makes changes or modifications to the unit without the expressed approval of the manufacturer will void user authority to operate the equipment.
- ☒ Use the supplied DC power supply to feed power to the machine.
- ☒ Please use recommended interconnection cables to connect the machine to other components.



---

**For the latest information on our products and a list of Kramer distributors, visit our Web site: [www.kramerelectronics.com](http://www.kramerelectronics.com), where updates to this user manual may be found. We welcome your questions, comments and feedback.**



**Caution**

**Safety Warning:**

Disconnect the unit from the power supply before opening/servicing.



---

**Kramer Electronics, Ltd.**

Web site: [www.kramerelectronics.com](http://www.kramerelectronics.com)

E-mail: [info@kramerel.com](mailto:info@kramerel.com)

**P/N: 2900-000413 REV 2**